



## Willesden Lane, NW6

£375,000

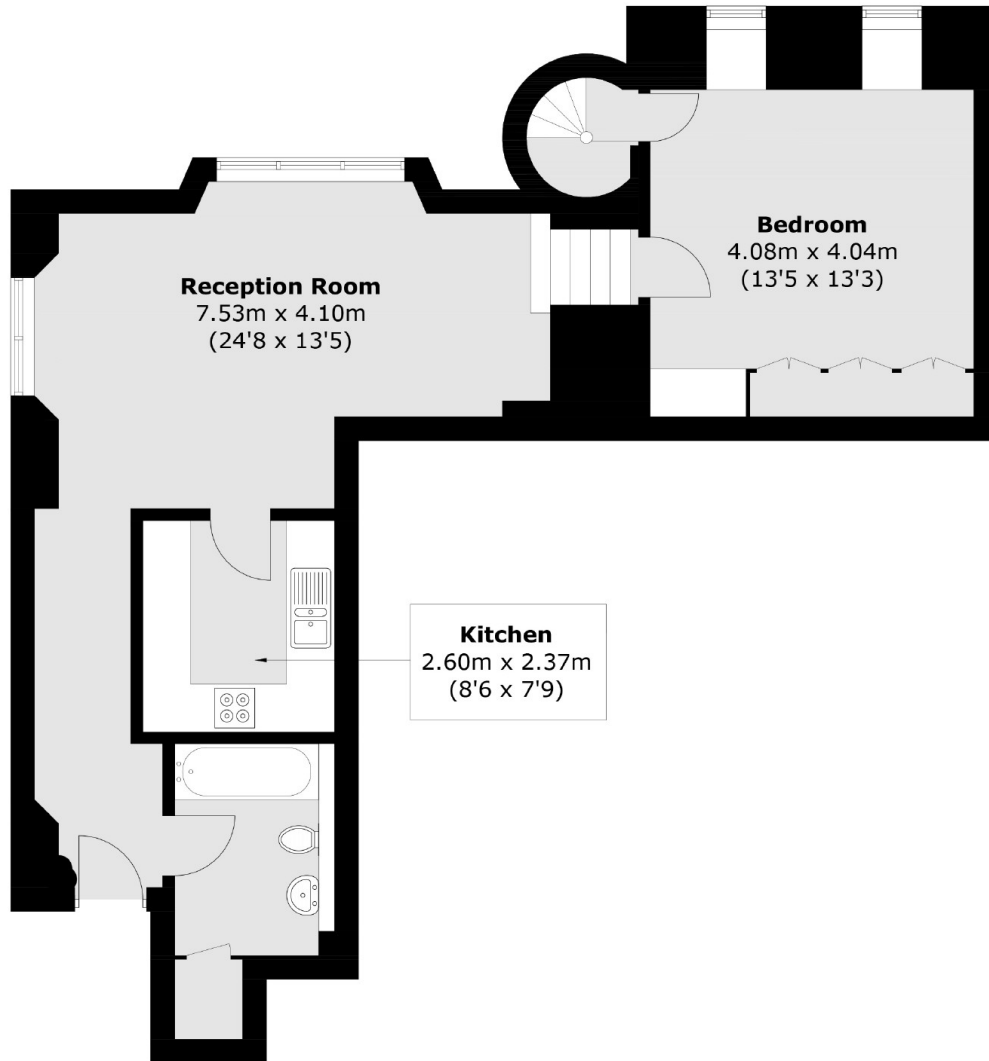
A unique one bedroom first floor flat in a converted church, with its own access to the communal gardens down an internal spiral staircase. The property benefits from having a separate kitchen, allocated off-street parking, and is available chain-free.

Willesden Lane provides access to the shops, cafes, restaurants and bars on the High Road in Willesden and Salusbury Road in Queen's Park. Transport links include Brondesbury Park (Overground), Queen's Park (Bakerloo & Overground), and Willesden Green (Jubilee).

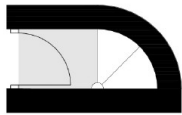
### Features

- One Bedroom
- First Floor Flat
- Communal Gardens
- Allocated Off-Street Parking
- Chain-Free
- Close To Transport Links

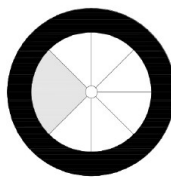
# Willesden Lane, London, NW6



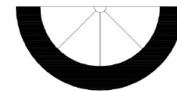
**Second Floor**



**Lower Ground Floor**



**Ground Floor**



**First Floor**

Total area (approx.): 69.2 sq. m (744.9 sq. ft)