



Hillside, NW10

£290,000

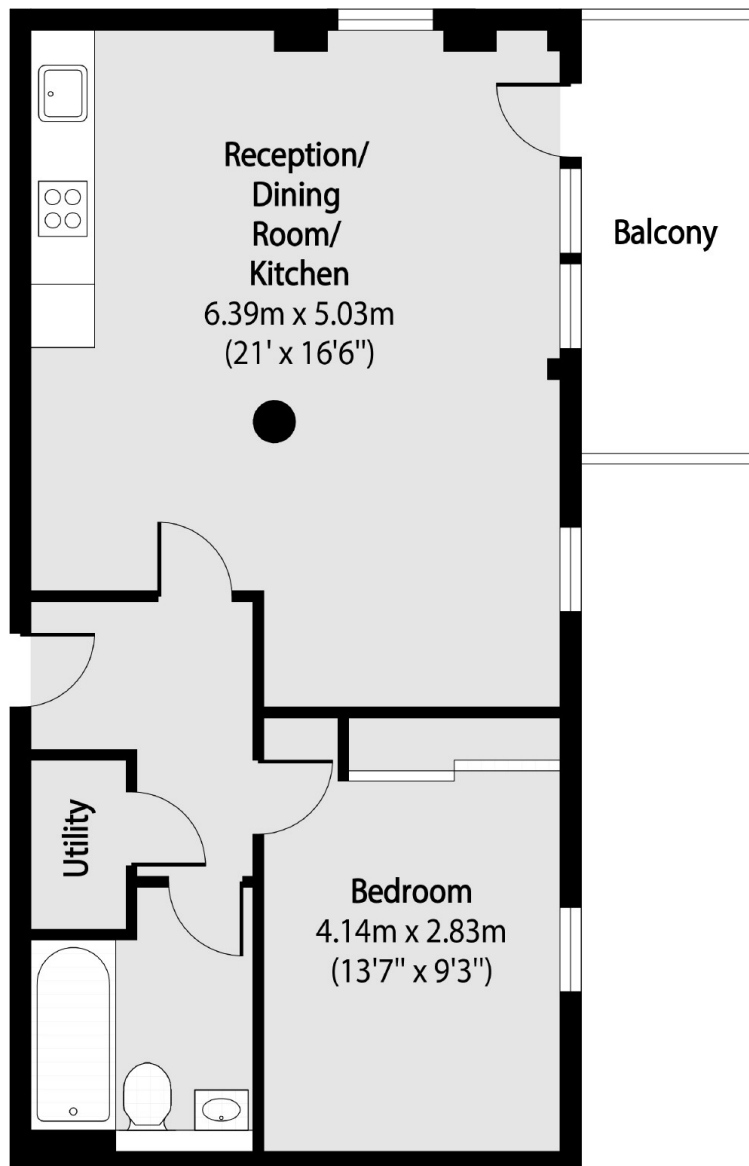
A light and spacious one bedroom flat in a secure modern development on the second floor with lift access. The property benefits from having an open plan kitchen and reception room, a utility room, balcony, underground allocated parking space, and is available chain-free.

Hillside is located near to the shops, cafes and amenities on Craven Park and Harlesden High Street, and is in close proximity to Roundwood Park. Transport links include Harlesden (Bakerloo & Overground) and Stonebridge Park (Bakerloo & Overground).

Features

- One Bedroom
- Open Plan Kitchen & Reception
- Balcony
- Secure Modern Development
- Off-Street Allocated Parking
- Chain-Free

Hillside, London, NW10



Total area (approx): 52.84 sq m (569 sq. ft)

Balcony total area (approx): 6.56 sq m (71 sq. ft)