



Glengall Road, NW6

£1,200,000

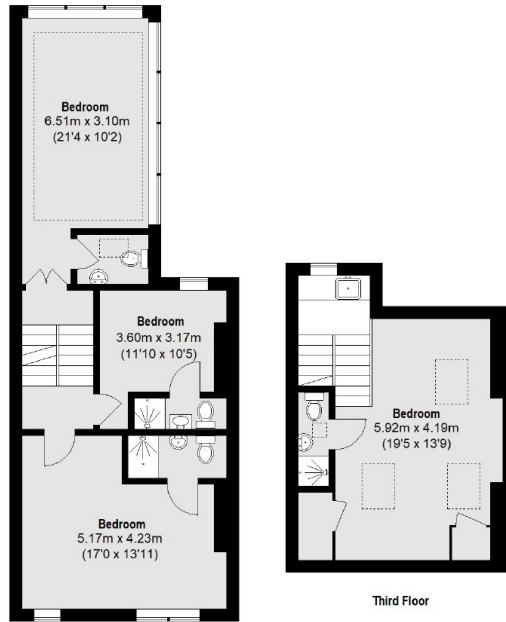
A unique development opportunity to acquire a six bedroom mid terraced freehold house nestled between Queen's Park and West Hampstead, arranged over four floors, with a private rear garden.

Glengall Road is located on a tree-lined street close to the shops, cafes, and amenities on Salusbury Road, the High Road, with West Hampstead and the green open spaces of Queen's Park close by. Transport links include Queen's Park (Barkerloo & Overground), Kilburn (Jubilee), and Kilburn High Road (Overground).

Features

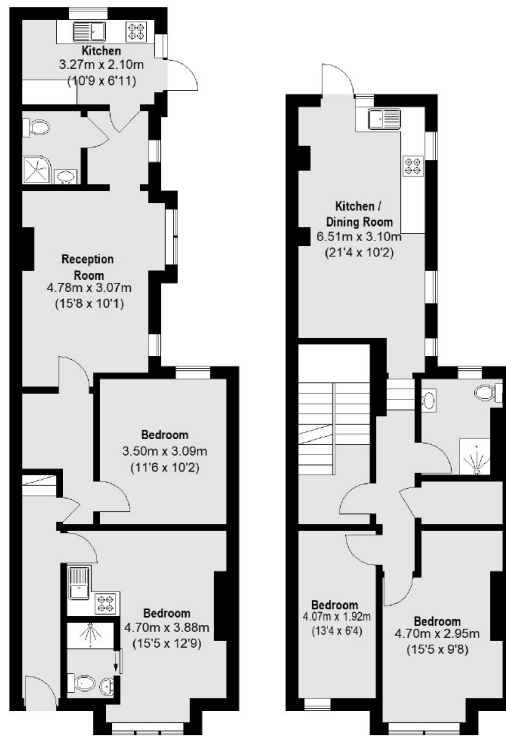
- Freehold House
- Six Bedrooms
- South-Facing Garden
- Chain-Free
- Potential To Extend
- Prime Location

Glengall Road, London, NW6



Second Floor

Third Floor



Ground Floor

First Floor

Total area (approx.): 220.78 sq. m (2376 Sq. ft)