



Buchanan Gardens, NW10

£800,000

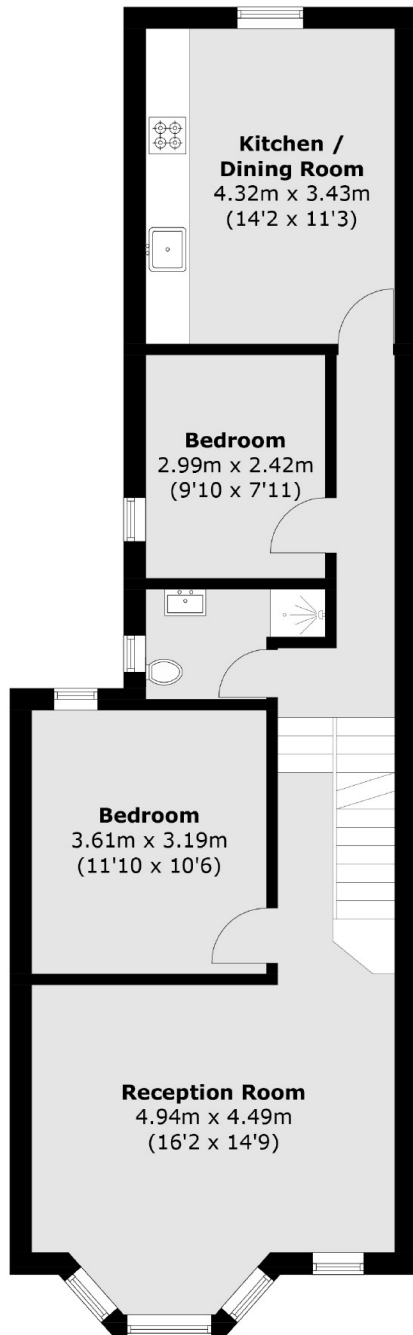
A recently extended three double bedroom first floor flat in a Victorian conversion, arranged over two floors, in excellent condition throughout. The property benefits from having a large eat-in fully integrated kitchen to the rear, a spacious reception room occupying the bay window to the front, two bathrooms, and under eaves storage.

Buchanan Gardens is a tree-lined residential street in prime Kensal Rise, with access to the shops, cafes, bars and restaurants on College Road and Chamberlayne Road, and the green open spaces in Queen's Park. Transport links include Kensal Rise (Overground) and Kensal Green (Bakerloo & Overground).

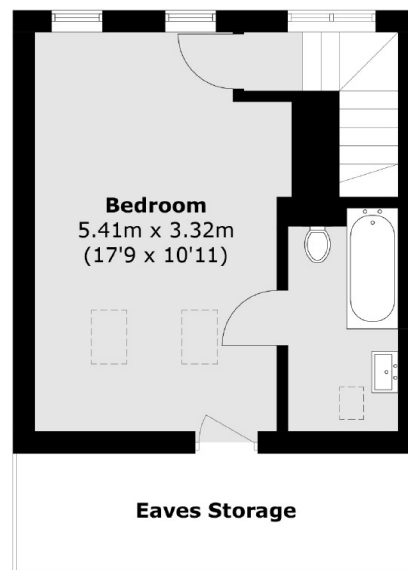
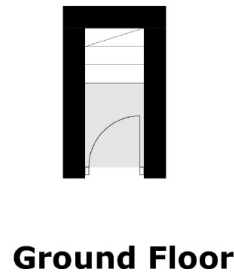
Features

- Three Double Bedrooms
- Two Bathrooms
- Separate Eat-In Kitchen
- Excellent Condition
- Share Of Freehold
- Close To Local Amenities

Buchanan Gardens, London, NW10



First Floor



Second Floor

Total area (approx.): 98.5 sq. m (1,060.2 sq. ft)
(Excluding Eaves Storage)