



## Kilburn Lane, W10

£450,000

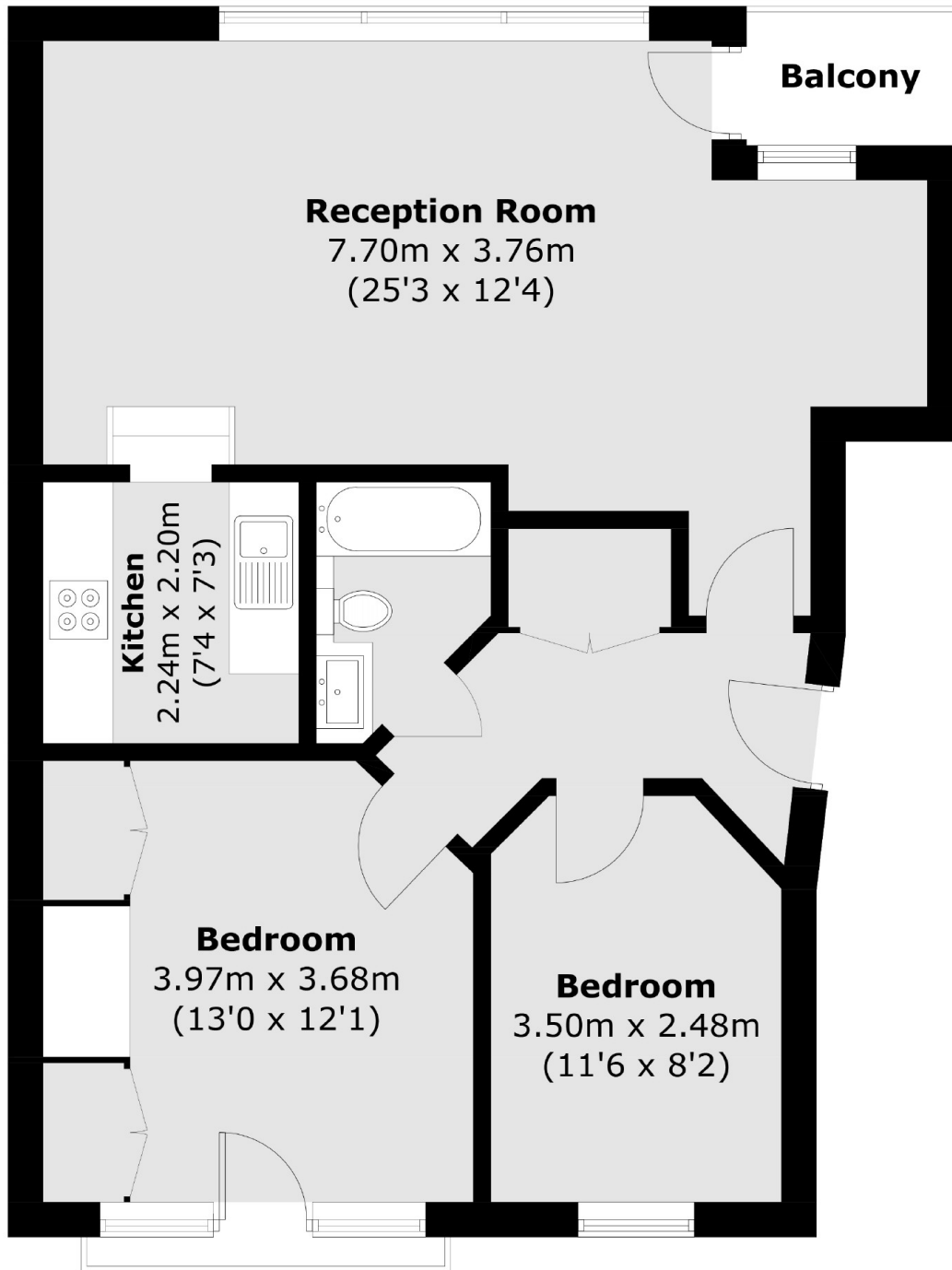
A spacious two double bedroom flat on the ground floor of a purpose built gated development. The property benefits from having a large reception room with a semi separate fully integrated kitchen, a balcony, built-in storage, communal gardens, and is available chain-free.

Kilburn Lane is close to the shops, cafes, and restaurants in Kensal Rise, and the green open spaces of Queen's Park. Transport links include Kensal Rise (Overground), Kensal Green (Bakerloo & Overground), and Queen's Park (Bakerloo & Overground).

### Features

- Two Double Bedrooms
- Large Reception Room
- Secure Gated Development
- Balcony
- Close To Local Amenities
- Close To Transport Links

# Kilburn Lane, London, W10



Total area (approx.): 66.1 sq. m (711.5 sq. ft)  
Balcony area : 2.1 sq. m (22.6 sq. ft)