



## Mostyn Gardens, NW10

### £1,150,000

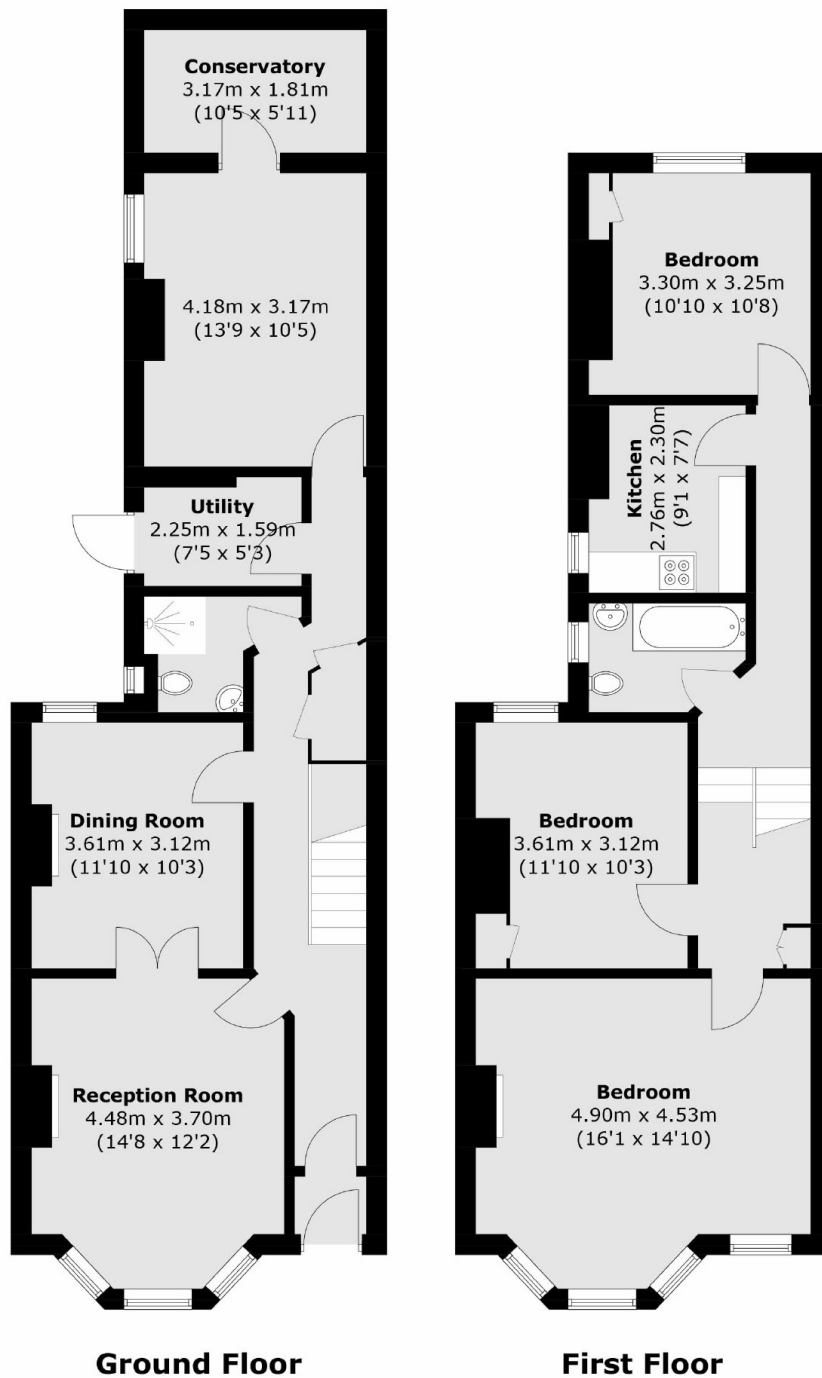
An opportunity to acquire a four bedroom mid terrace Victorian house, located in the heart of Kensal Rise. The property benefits from having a south facing aspect to the facade, has the potential to be extended at the rear and into the roof space, and is available chain-free.

Mostyn Gardens is a residential tree-lined road located close to the shops, cafes and amenities on Chamberlayne Road and College Road, with the green open spaces of Queen's Park nearby. Transport links include Kensal Rise (Overground), Kensal Green (Bakerloo & Overground), and multiple bus routes.

### Features

- Freehold
- Four Bedrooms
- Two Bathrooms
- Potential To Extend
- Chain-Free
- Popular Location

# Mostyn Gardens, London, NW10



Total area (approx.): 136.1 sq. m (1,465.0 sq. ft)