



College Road, NW10

£550,000

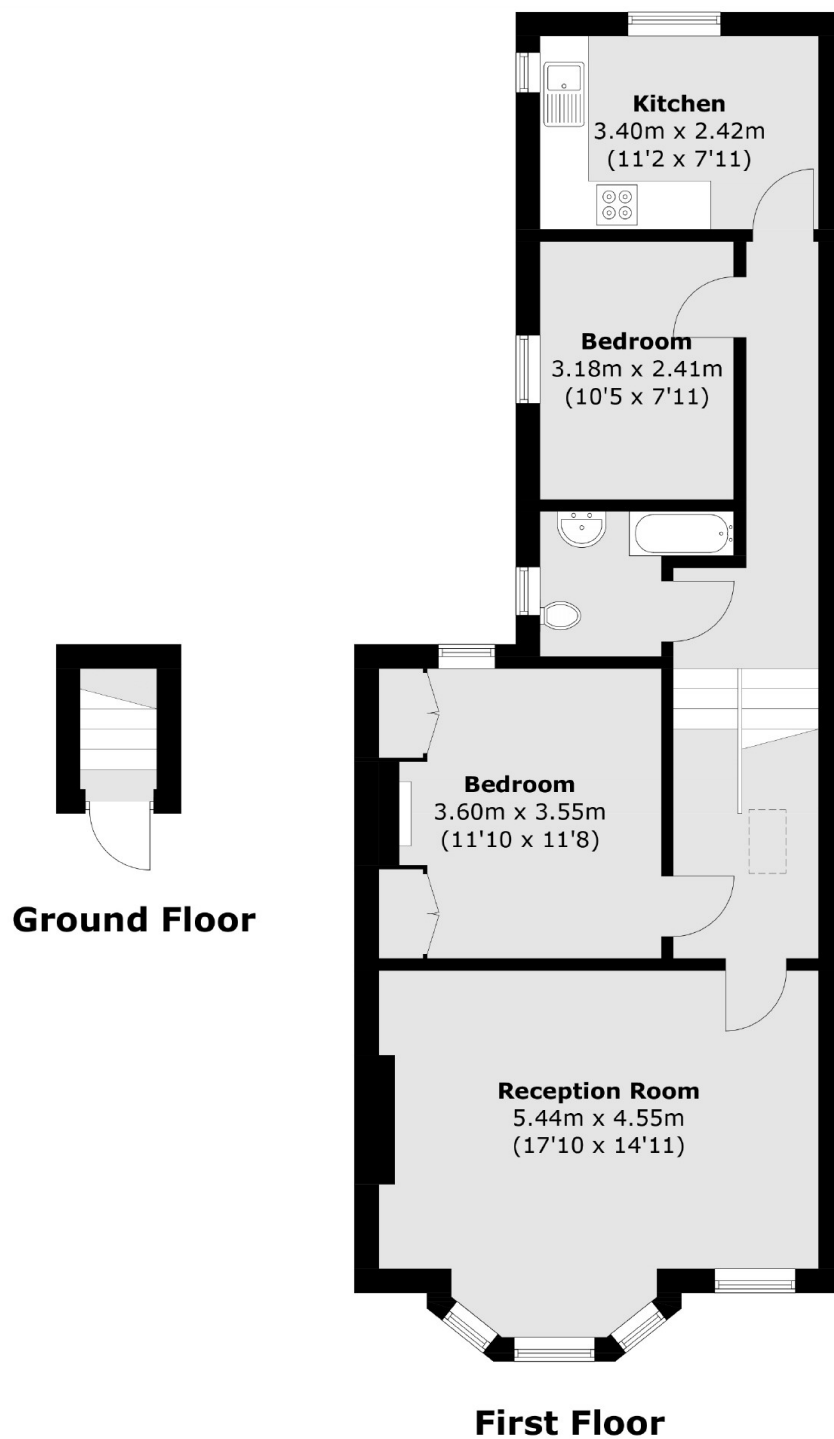
A spacious two double bedroom first floor flat in a Victorian conversion, located close to King Edward VII Park. The property benefits from having a separate kitchen, a west facing reception room, has the potential to be extended, and is available chain-free.

College Road is a treelined street that provides access to the shops, cafes, restaurants and bars on Chamberlayne Road and College Road, with Queen's Park nearby. Transport links include Kensal Green (Bakerloo & Overground) and Kensal Rise (Overground).

Features

- First Floor Flat
- Two Double Bedrooms
- Separate Kitchen
- Share Of Freehold
- Potential To Extend
- Chain-Free

College Road, London, NW10



Total area (approx.): 71.0 sq. m (764.2 sq. ft)