



Knatchbull Road, NW10

£325,000

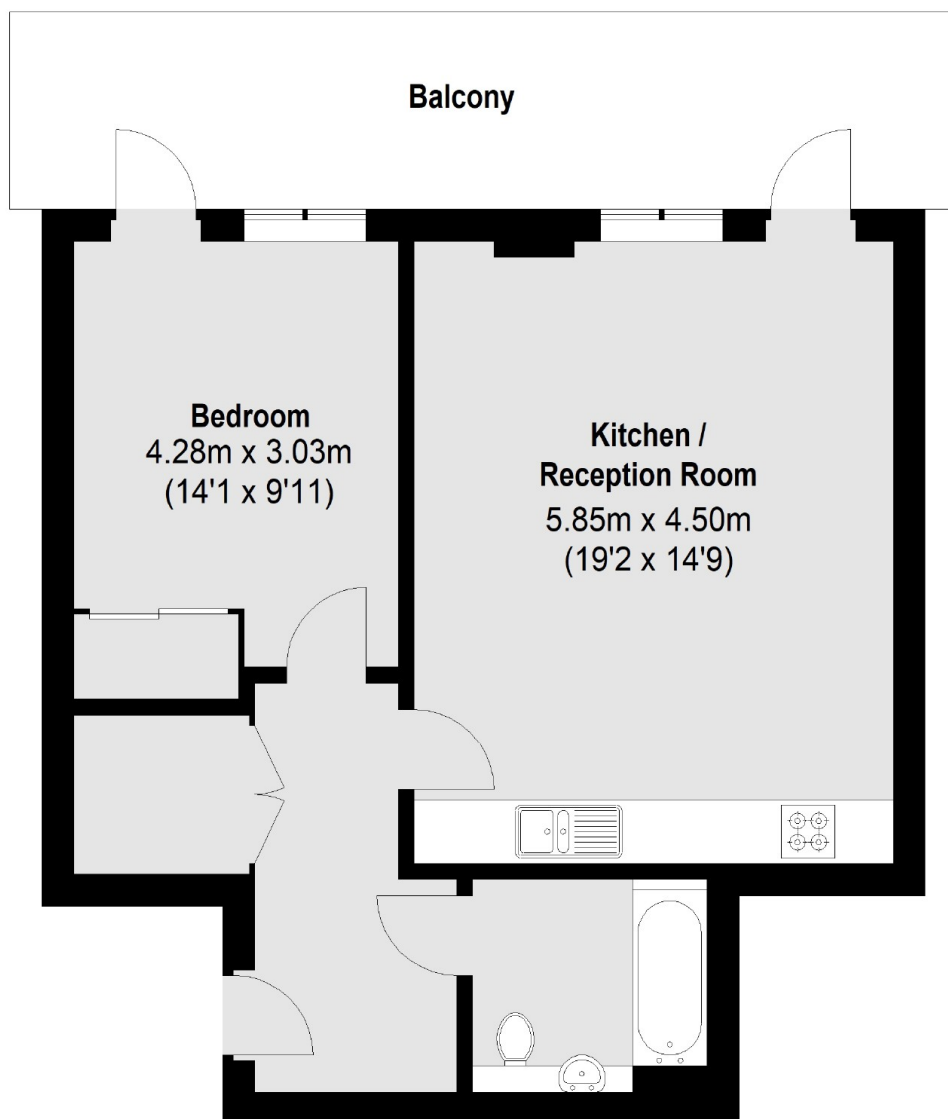
A light and spacious one bedroom third floor flat, in a secure modern development, with lift access. The property benefits from having large open-plan kitchen and reception room, a covered balcony for winter use, built-in storage, underground parking with EV charging, communal gardens, and in excellent condition throughout.

Allegro House is located near to the shops, cafes and amenities on Craven Park and Harlesden High Street, and in close proximity to Roundwood Park. Transport links include Harlesden (Bakerloo & Overground) and Stonebridge Park (Bakerloo & Overground).

Features

- One Bedroom
- Large Reception Room
- Covered Balcony
- Underground Parking
- Lift Access
- Communal Gardens

Knatchbull Road, London, NW10



Third Floor

Total area (approx.): 54.86 sq. m (591 Sq. ft)
Balcony: 16.46 sq. m (177 Sq. ft)