



Hanover Road, NW10

£1,350,000

A spacious five bedroom mid-terrace family home, arranged over three floors, with a large private garden to the rear and off-street parking to the front. The property benefits from having two large reception rooms, a fully integrated kitchen and separate dining room, and is good condition throughout.

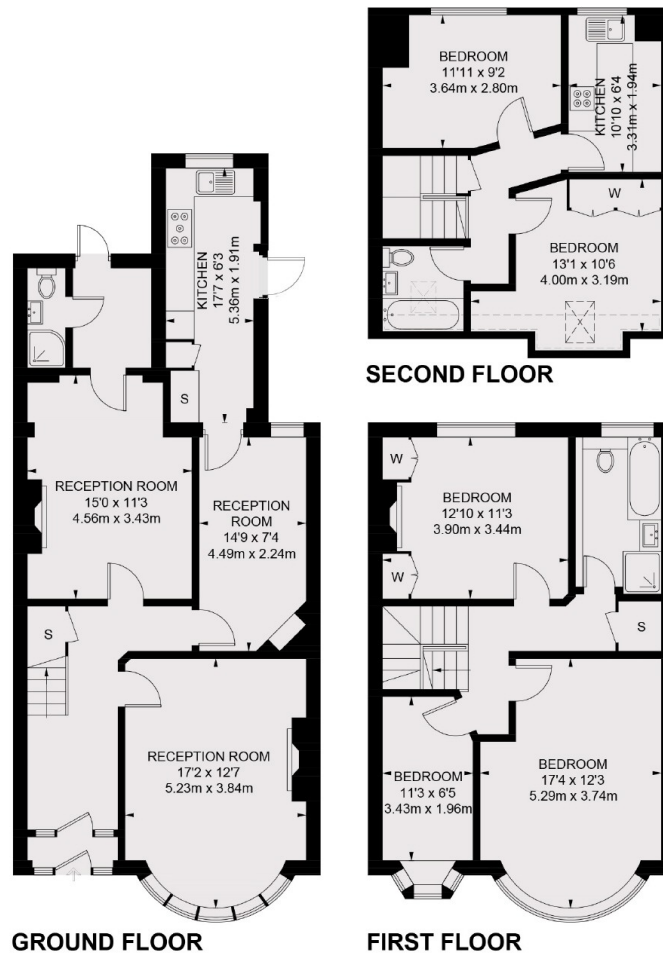
Hanover Road is a residential tree-lined street located near to the shops, cafes, and restaurants on Chamberlayne Road, with easy access to the green open spaces of Queen's Park. Transport links include Kensal Rise (Overground), Brondesbury Park (Overground), and Willesden Green (Jubilee).

Features

- Freehold House
- Five Bedrooms
- Two Reception Rooms
- Separate Dining Room
- Private Garden
- Off-Street Parking

Hanover Road, London, NW10

 = REDUCED HEADROOM BELOW 1.5m / 5'0



TOTAL APPROX. FLOOR AREA 1822 SQ. FT. (169.3 SQ. M.)