



Buckingham Road, NW10

£699,999

A spacious three double bedroom end of terrace Victorian house, with its own garage and driveway. The property benefits from having a double reception room to the front occupying the bay window and flooded with natural light, a separate kitchen leading to the rear garden, and has the potential to be extended.

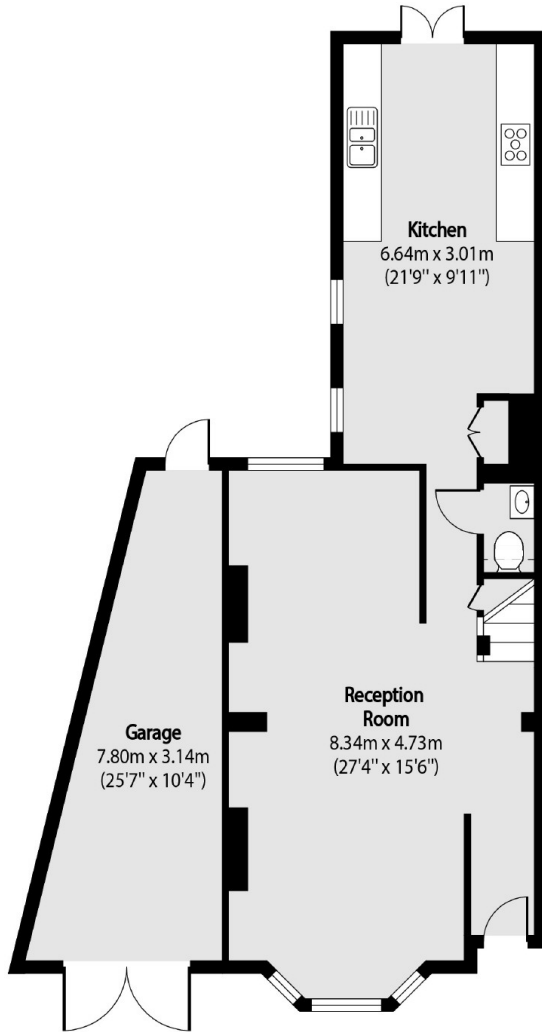
Buckingham Road is a quiet residential street located close to the shops and cafes on the High Street. Roundwood Park and King Edward VII Park are nearby, with transport links including Willesden Junction (Bakerloo & Overground), the newly developed Old Oak Common station, and multiple bus routes.

Features

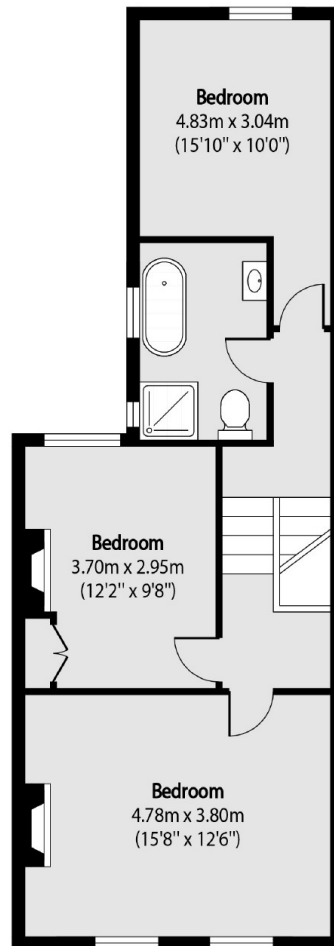
- Freehold House
- Three Double Bedrooms
- Bathroom & WC
- Chain-Free
- Garage & Driveway
- Close To Local Amenities

Buckingham Road, London, NW10

Ground Floor



First Floor



Total area (approx): 114.85 sq m (1236 sq. ft)

Garage total area (approx): 16.56 sq m (178 sq. ft)