



## College Road, NW10

£600,000

A spacious two double bedroom first floor flat in a Victorian conversion, with a West-facing reception room occupying a bay window. The property benefits from having a separate kitchen, flooded with natural light throughout, available chain-free, and has the potential to be extended.

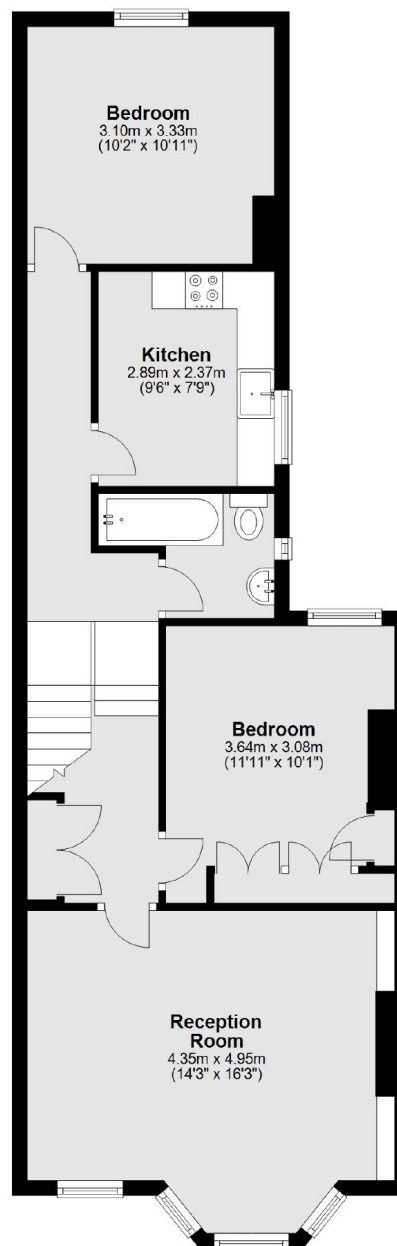
College Road is treelined street that provides access to the shops, cafes, restaurants and bars on Chamberlayne Road and College Road, with Queen's Park nearby. Transport links include Kensal Green (Bakerloo & Overground) and Kensal Rise (Overground).

### Features

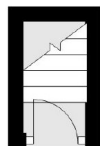
- First Floor Flat
- Two Double Bedrooms
- Separate Kitchen
- Chain-Free
- Potential To Extend
- Close To Transport Links

# College Road, London, NW10

## First Floor



## Ground Floor



Total area: approx. 66.4 sq. metres (714.4 sq. feet)