

Hanover Court, Milton Court Lane, Dorking, RH4 3EQ

Asking Price £349,995

Council Tax Band: D



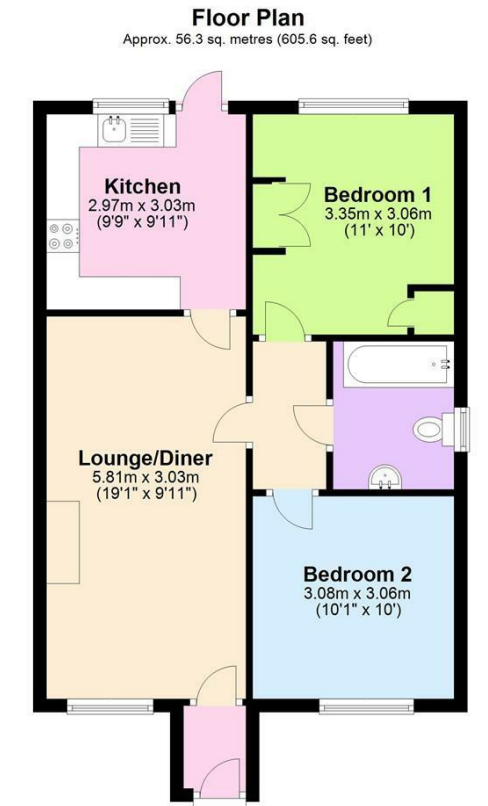


LOCATION

We are delighted to bring to the market this rarely available two bedroom, end of terrace bungalow for over 55s. It is located on a private, quiet development with beautiful views stretching across Ranmore. It is also within walking distance to Dorking town centre which offers a comprehensive range of shopping, social and recreational amenities. Dorking mainline and Deepdene railway stations are within proximity (0.9 miles), just a short 15 minute walk away offering a direct service into London and the M25 is easily accessible just 7 miles away.



Open House Horsham



Total area: approx. 56.3 sq. metres (605.6 sq. feet)

Total measurements include garage. Whilst every attempt has been made to ensure the accuracy of the floor plan contained here, measurement of doors, windows, rooms and any other items are approximate and no responsibility is taken for any error, omission, or mis-statement. This plan is for illustrative purposes only and should be used as such by any prospective purchaser. The services, systems and appliances have not been tested and no guarantee as to their operability or efficiency can be given.  
Plan produced using PlanUp.



Energy Efficiency Rating		
	Current	Potential
Very energy efficient - lower running costs		
(92 plus) <b>A</b>		<b>89</b>
(81-91) <b>B</b>		
(69-80) <b>C</b>		
(55-68) <b>D</b>	<b>58</b>	
(39-54) <b>E</b>		
(21-38) <b>F</b>		
(1-20) <b>G</b>		
Not energy efficient - higher running costs		
England & Wales	EU Directive 2002/91/EC	