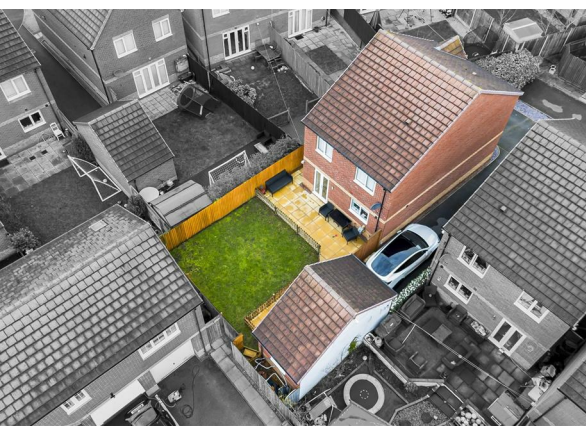
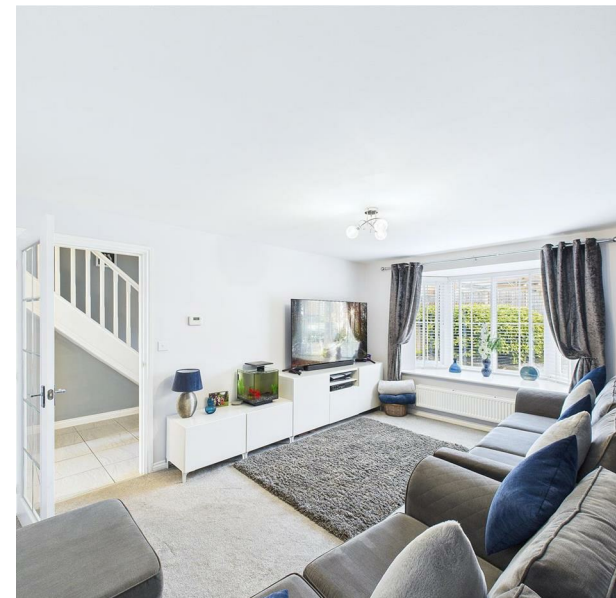
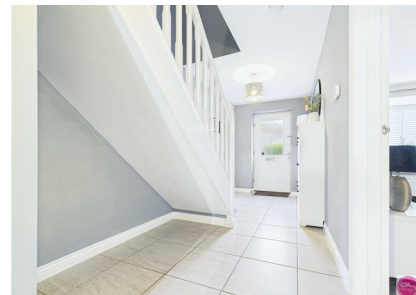


Oakway Drive, Woodville, Swadlincote, DE11 8FZ

£300,000

Council Tax Band: C





Situated in a popular and modern development in Woodville, this beautifully presented family home offers well-balanced accommodation arranged over two floors, along with the added benefit of a garage and separate office space. The property features a spacious living room, a stylish open-plan kitchen/diner, separate laundry room and ground floor WC, while upstairs provides four bedrooms including a main bedroom with en-suite, plus a contemporary family bathroom. Outside, the home enjoys a private landscaped rear garden and driveway parking, making this an ideal choice for families, professionals or those needing space to work from home.



Open House Burton & Swadlincote

