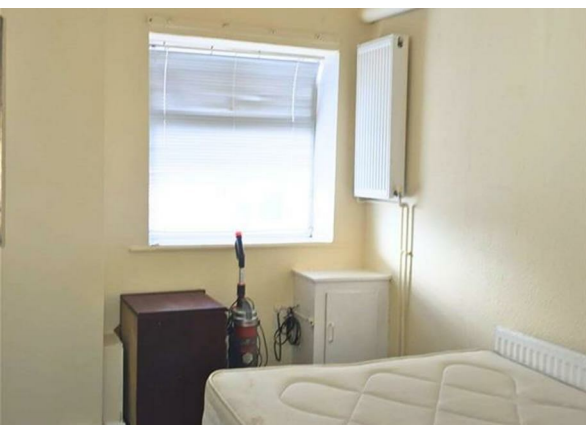
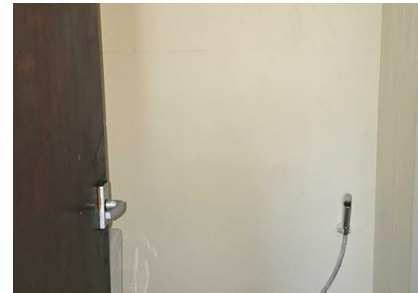


Birch Lane, Manchester, M13 0WN
£675 Per Calendar Month
Council Tax Band: A



AVAILABLE NOW:

One bedroom 1st floor flat located at M13 0XQ,

SINGLE OR COUPLE OCCUPANCY ONLY.

BILLS NOT INCLUDED.

ONE BEDROOM FIRST FLOOR FLAT, one of only 6 in the building.

Fully furnished with a double bed, fitted cupboards, a wardrobe and 2 seater sofa.

Kitchen with oven/hob/extractor and fridge.

Gas central heating.

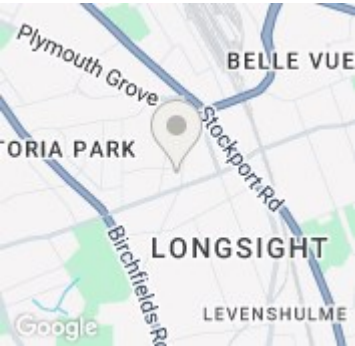
Shower bathroom.

Residents' Parking is available.

For prospective tenants, it is important to note that applicants must meet specific affordability criteria, including being in full-time employment within the UK and earning a minimum annual



Open House South Manchester



Energy Efficiency Rating		
	Current	Potential
Very energy efficient - lower running costs		
(92 plus) A		
(81-91) B		
(69-80) C		
(55-68) D		
(39-54) E		
(21-38) F		
(1-20) G		
Not energy efficient - higher running costs		
England & Wales		EU Directive 2002/91/EC