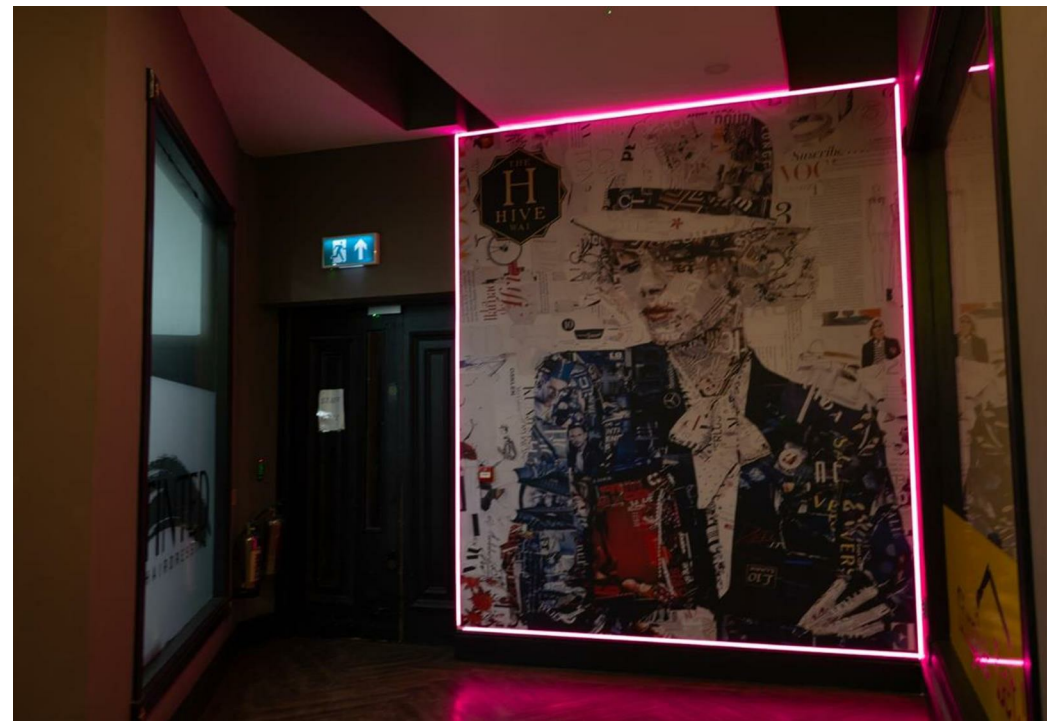


The Hive, 27-31 Sankey Street, Warrington, Cheshire, WA1 1XG

£200 Per Week

Council Tax Band: Exempt



The property is located opposite The Golden Square Shopping Centre within the non-pedestrianised section of Warrington town centre. The principal shopping area being nearby with existing occupiers including Specsavers, Hair Salons and Estate Agents. This location is popular for Class E users including Building Societies and Estate Agents due to its close proximity of the central retail area.

TERMS OF LEASE

The premises are available on flexible lease terms

LEGAL COSTS

Each party is responsible for paying their own legal costs



The Hive Sankey Street, Warrington, WA1

1XG

01925 987 085

info@real5estates.com

www.real5estates.com



Energy Efficiency Rating		
	Current	Potential
Very energy efficient - lower running costs		
(92 plus) A		
(81-91) B		
(69-80) C		
(55-68) D		
(39-54) E		
(21-38) F		
(1-20) G		
Not energy efficient - higher running costs		
England & Wales	EU Directive 2002/91/EC	