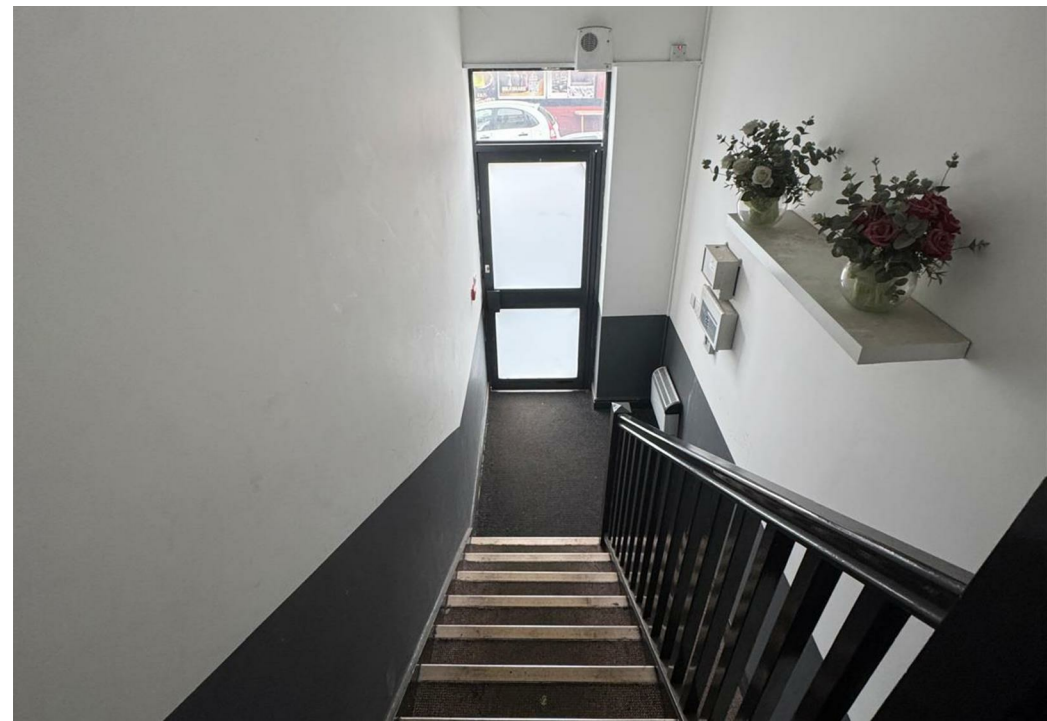
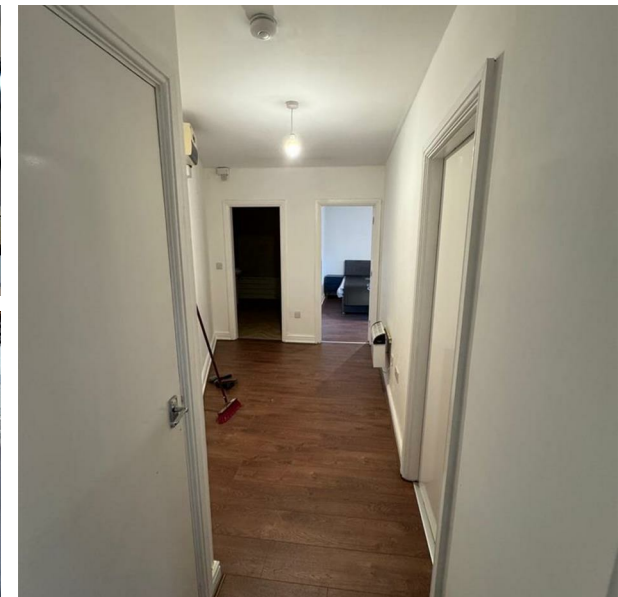
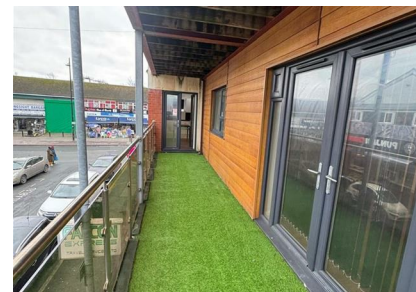


Flat 1, Stamford Road, Manchester, M13 0SE

£1,350 Per Month

Council Tax Band:



*** 2 BEDROOM FLAT TO RENT IN LONGSIGHT ***

Nestled on Stamford Road, Longsight in the vibrant city of Manchester, this charming apartment offers a delightful living experience. With a total area of 570 square feet, the property is well-designed to maximise space and comfort.

Upon entering, you are welcomed into a cosy reception room, perfect for relaxing or entertaining guests. The two bedrooms provide ample space for rest and privacy, making it an ideal home for small families, couples, or individuals seeking a peaceful retreat. The bathroom is conveniently located, ensuring ease of access for all residents.

This property is not only a comfortable living space but also benefits from its prime location. Manchester is known for its rich culture, diverse amenities, and excellent transport links, making it a desirable place to live. Whether you are looking to explore the local shops, enjoy the vibrant nightlife, or take advantage of the nearby parks, this house places you at the heart of it all.

In summary, this flat on Stamford Road presents a wonderful opportunity for those seeking a charming and conveniently located home in Manchester. With its well-appointed rooms and inviting atmosphere, it is sure to appeal to a variety of buyers or renters. Do not miss the chance to make this delightful property your own.

Contact us today to make this lovely property your home.

Open House Estate Agents
61 Kingsway, Manchester M19 2LL
0161 225 6926



Open House South East Manchester



Energy Efficiency Rating		
	Current	Potential
<i>Very energy efficient - lower running costs</i>		
(92 plus) A		
(81-91) B		
(69-80) C		
(55-68) D		
(39-54) E		
(21-38) F		
(1-20) G		
<i>Not energy efficient - higher running costs</i>		
England & Wales		EU Directive 2002/91/EC