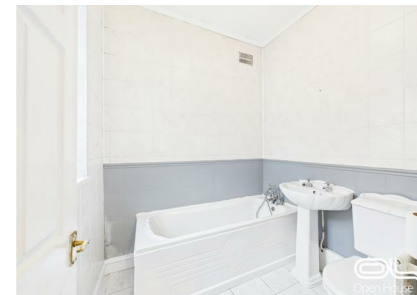


Gordon Street, Stoke-On-Trent, ST6 1HZ

£770 Per Month

Council Tax Band: A



Please email agent for viewing slots

Nestled in the heart of Stoke-On-Trent, this charming mid-terrace house on Gordon Street offers a delightful blend of character and modern living. Built in 1900, the property boasts a rich history while providing a comfortable and inviting atmosphere for its residents.

Spanning an impressive 818 square feet, this home features two well-proportioned reception rooms, perfect for entertaining guests or enjoying quiet evenings with family. The layout is both practical and appealing, allowing for a seamless flow between spaces. The two bedrooms provide ample accommodation, making it an ideal choice for couples, small families, or even those seeking a cosy retreat.

The bathroom is conveniently located, ensuring ease of access for all occupants. The property’s design reflects the charm of its era, with potential for personal touches to create a truly unique living space.

Situated in a vibrant community, this home is close to local amenities, schools, and transport links, making it an excellent choice for those looking to enjoy the conveniences of modern life while residing in a historic setting. This property presents a wonderful opportunity to own a piece of Stoke-On-Trent's heritage. Do not miss the chance to make this lovely house your new home.



Open House Staffordshire

