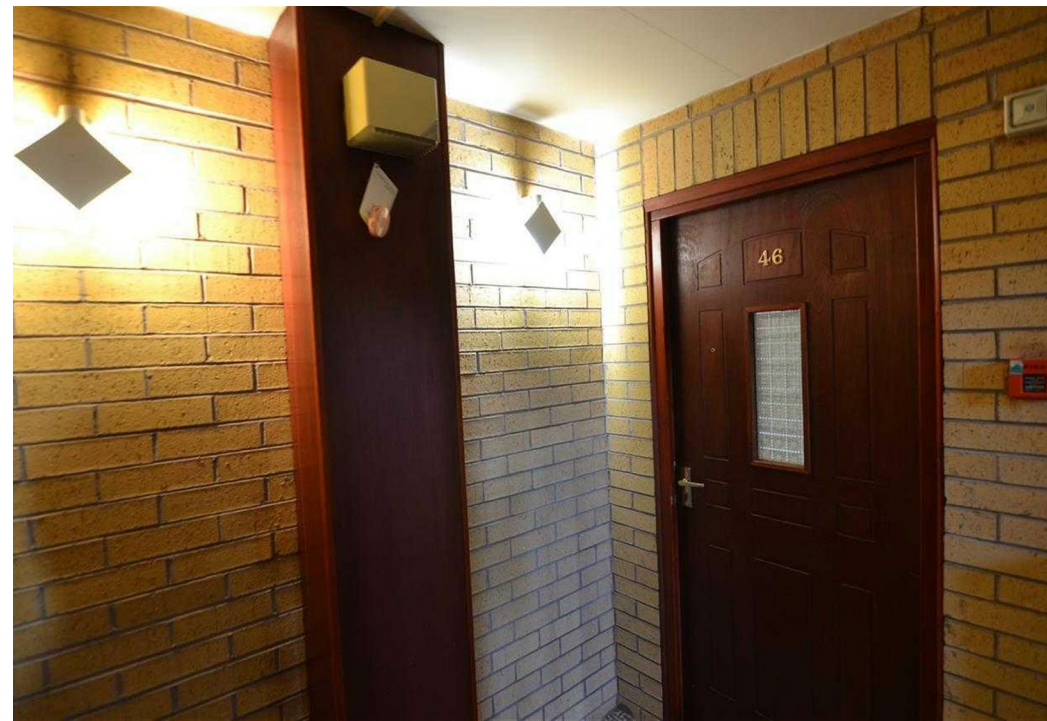
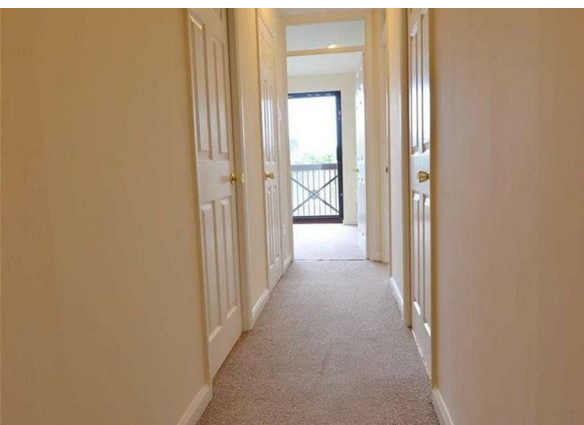


Peter James Court, Stafford, Staffordshire, ST16 3YU

£795 Per Month

Council Tax Band:

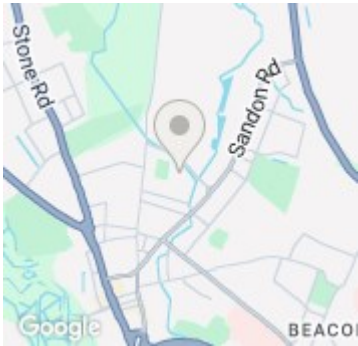


Location Location Location - A short distance from Stafford town centre and opposite the Isabella Nature Reserve Trail. Probably one of the best situated apartments on this development overlooking the communal gardens and Stafford Rangers.

- * Two good sized bedrooms * Large lounge * Fully fitted kitchen * Good sized bathroom with bath and shower
 - * Newly decorated throughout.
- Sorry No Pets



Open House Staffordshire



Energy Efficiency Rating		
	Current	Potential
Very energy efficient - lower running costs		
(92 plus) A		
(81-91) B		
(69-80) C		
(55-68) D		
(39-54) E		
(21-38) F		
(1-20) G		
Not energy efficient - higher running costs		
England & Wales	EU Directive 2002/91/EC	