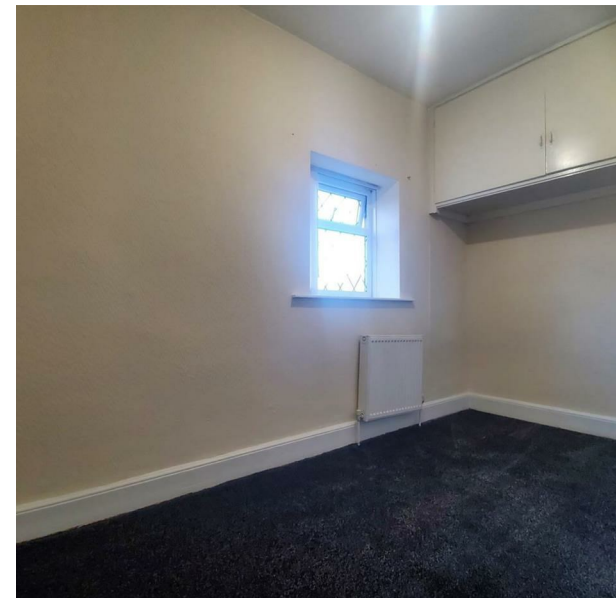


Elm Street, Huddersfield, HD4 6NP

£750

Council Tax Band: A



Open House Estate Agents bring this 3 bedroomed Semi Detached property to the market, situated in the popular locatiion of Newsome.

This property has had new carpets and flooring, as well as a new Kitchen with new electrical consumer goods and a new bathroom suite installed - and is available to rent immediately.

Newsome is close to the University campuses and is ideally placed with local amenities in a few minutes walk, along with excellent transport links to Huddersfield City Centre and beyond.

The Property briefly comprises:

Entrance, Kitchen & Diner with wood flooring, new appliances, Large Living Room with wooden flooring and fireplace, Cellar Store.

Upstairs: 3 bedrooms with quirky layout, Family Bathroom with New Full sized Bath and mixer Shower, Wash Basin, Low flush WC.

Gas Central Heating and UPVC Double GLazing throughout. Council Tax Band A, EPC rating D.

Call us now to arrange your viewing - our lines are open 24 hours a day 7 days a week to take your call !!



Open House Huddersfield

