

Winding House Drive, Hednesford, WS12 4FP
Offers In The Region Of £285,000
Council Tax Band: D

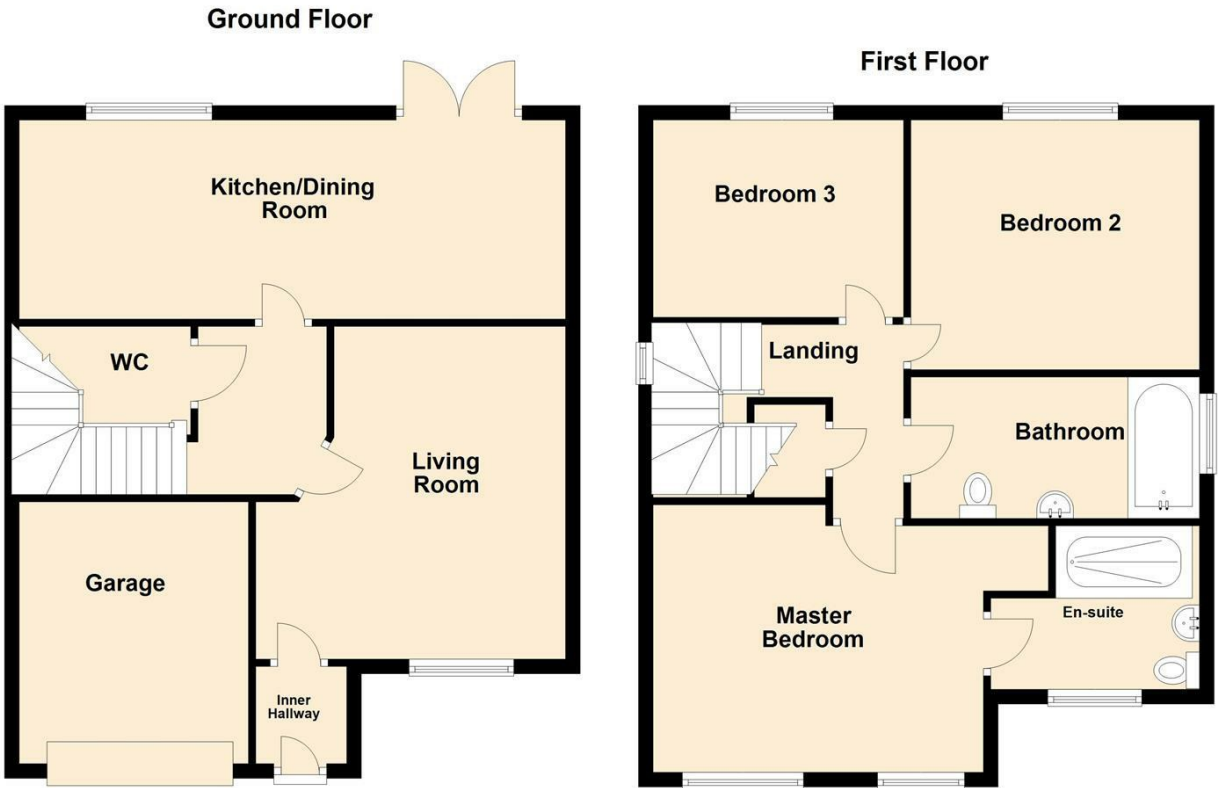


A Modern Detached Family Home in a Popular Cannock Chase Location – Winding House Drive, Hednesford

Situated in a sought-after modern development just a stone’s throw from the stunning Cannock Chase Area of Outstanding Natural Beauty, this stylish three-bedroom detached home on Winding House Drive offers the perfect balance of comfort, practicality, and convenience.



Open House Staffordshire



Energy Efficiency Rating		
	Current	Potential
Very energy efficient - lower running costs		
(92 plus) A		93
(81-91) B	81	
(69-80) C		
(55-68) D		
(39-54) E		
(21-38) F		
(1-20) G		
Not energy efficient - higher running costs		
England & Wales	EU Directive 2002/91/EC	