

**Stockport Road, Denton, Manchester, M34 6EG**  
**Offers In The Region Of £299,995**  
**Council Tax Band: C**





Nestled on Stockport Road in the charming area of Denton, Manchester, this chain free three-bedroom house presents an excellent opportunity for those looking to create their dream home. With ample space to accommodate a family, the property offers a blank canvas, allowing you to modernise and personalize it to your taste.

The house features a garage, providing convenient storage or parking options, which is a valuable asset in this bustling area. Its prime location near the motorway ensures easy access to surrounding areas, making commuting a breeze for both work and leisure.

Families will appreciate the proximity to local schools, which are within easy reach, ensuring that educational needs are well catered for. This property is ideal for those who value community and convenience.

While the house does require modernisation, this presents a unique chance to enhance its charm and functionality. With a little vision and effort, you can transform this property into a stylish and comfortable home that reflects your personal style.

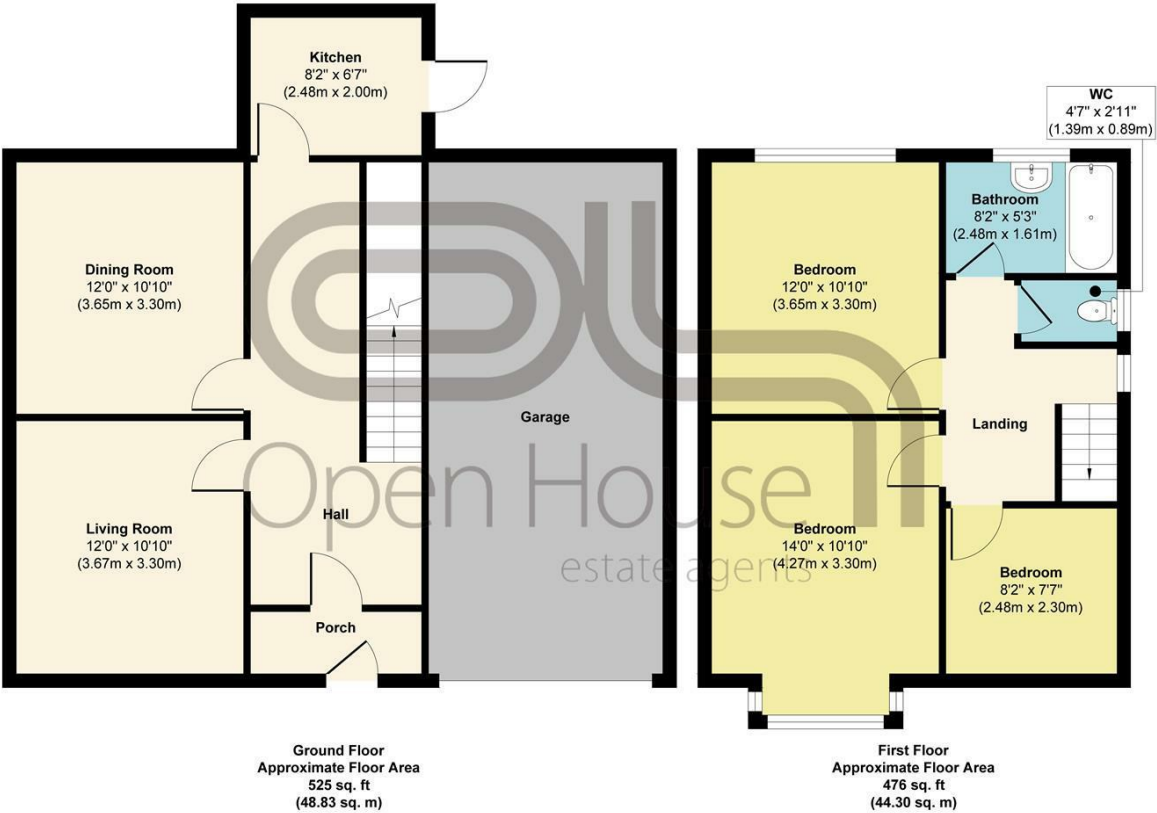
In summary, this three-bedroom house on Stockport Road is a promising prospect for buyers seeking a project in a well-connected area of Denton. With its garage, proximity to the motorway, and local schools, it offers both practicality and potential. Don't miss the chance to make this house your own.

Open House Estate Agents  
61 Kingsway  
Manchester  
M19 2LL  
0161 225 6926



Open House South East Manchester

449 Stockport Road Denton Manchester M34 6eg



Approx. Gross Internal Floor Area 1001 sq. ft / 93.13 sq. m (Excluding Garage)

Illustration for identification purposes only, measurements are approximate, not to scale.  
Produced by Elements Property



Energy Efficiency Rating		
	Current	Potential
Very energy efficient - lower running costs		
(92 plus) A		
(81-91) B		
(69-80) C		
(55-68) D		
(39-54) E		
(21-38) F		
(1-20) G		
Not energy efficient - higher running costs		
England & Wales		EU Directive 2002/91/EC