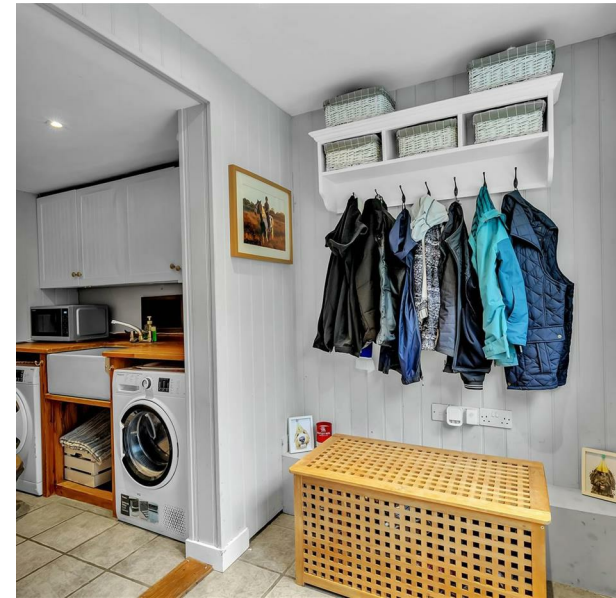


Woodfield Road, Rudgwick, Horsham, RH12 3EP

Asking Price £490,000

Council Tax Band: E

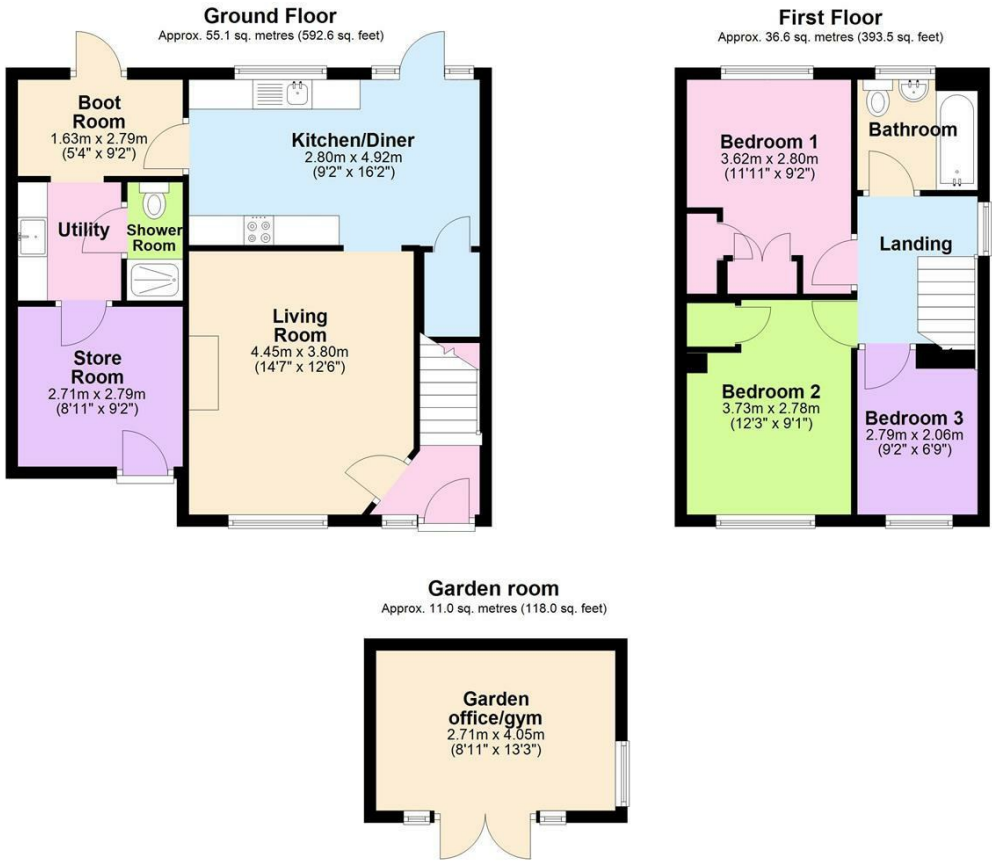


LOCATION

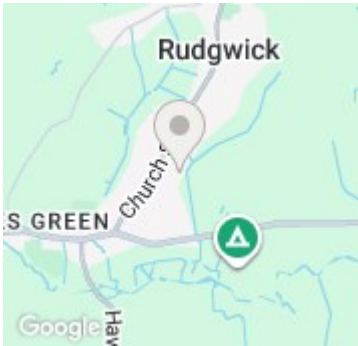
We are delighted to bring to the market this very well-presented detached family home in a popular residential location in the village of Rudgwick. Situated at end of a quiet cul-de-sac, it conveniently positioned just a few minutes walk from the local CO-OP store, pharmacy and beauticians and is also within easy walking distance of all the other amenities Rudgwick has to offer, including the primary school, medical centre and dentist.



Open House Horsham



Total area: approx. 102.6 sq. metres (1104.1 sq. feet)
Woodfield Road



| Energy Efficiency Rating | | |
|---|---------|-------------------------|
| | Current | Potential |
| Very energy efficient - lower running costs | | |
| (92 plus) A | | |
| (81-91) B | | |
| (69-80) C | | |
| (55-68) D | 64 | 71 |
| (39-54) E | | |
| (21-38) F | | |
| (1-20) G | | |
| Not energy efficient - higher running costs | | |
| England & Wales | | EU Directive 2002/91/EC |