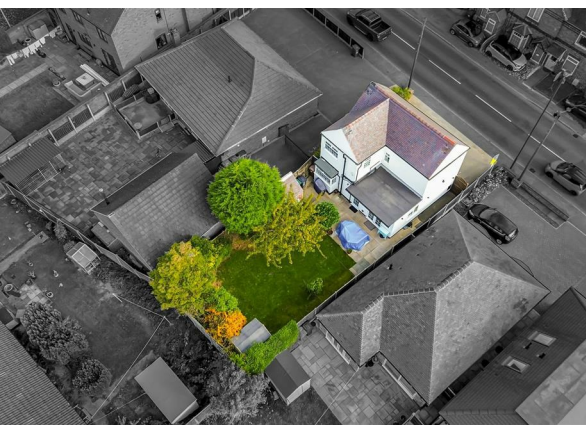
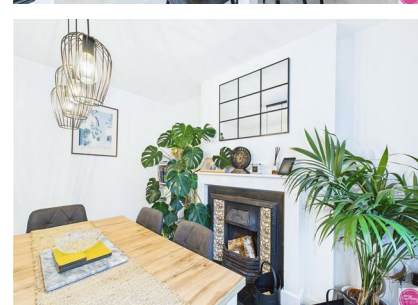


Main Street, Overseal, DE12 6LG

£300,000

Council Tax Band: C





Situated in a desirable location nearby National Forest but also accessible to amenities, this beautifully presented three-bedroom detached home offers a blend of contemporary styling and generous living space. With its bright interiors, modern kitchen, and well-tended garden, this property makes the ideal family home or upsize for buyers seeking both comfort and convenience.

Overseal is a sought-after South Derbyshire village within easy reach of Swadlincote and Ashby-de-la-Zouch. The area benefits from excellent local amenities, nearby schools, and scenic walks through the surrounding National Forest — perfect for family life and countryside walk living alike.



Open House Burton & Swadlincote

