

Beale Close, Broadbridge Heath, Horsham, RH12 3GY

£1,550 Per Month

Council Tax Band: C

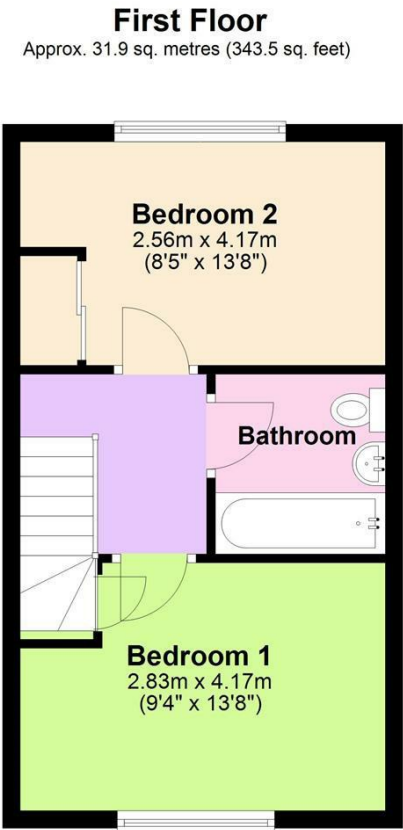
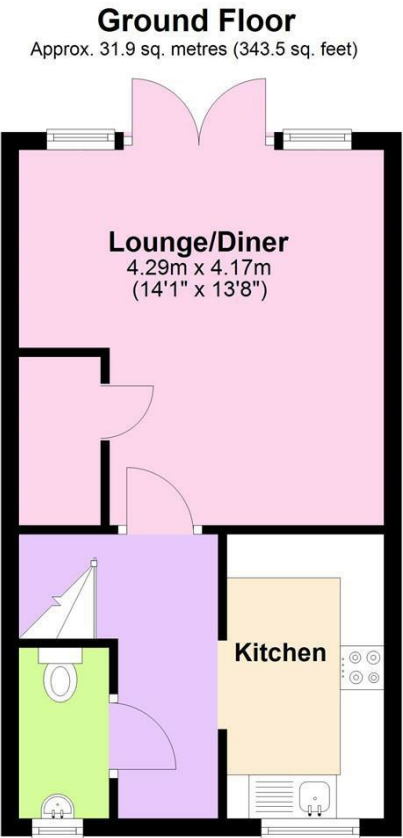


LOCATION

Open House Horsham are delighted to bring to the market this stylish two double bedroom property on the popular development of Wickhurst Green situated within the village of Broadbridge Heath. Broadbridge Heath itself has a post office, pub, primary school, Newbridge Garden centre, leisure centre and Tesco Extra, all of which are within walking distance. Whilst Horsham town centre with its wealth of shops, cafes and restaurants is approximately 1.5 miles away.



Open House Horsham



Total area: approx. 63.8 sq. metres (687.0 sq. feet)
Beale Close



Energy Efficiency Rating		
	Current	Potential
Very energy efficient - lower running costs		
(92 plus) A		97
(81-91) B	83	
(69-80) C		
(55-68) D		
(39-54) E		
(21-38) F		
(1-20) G		
Not energy efficient - higher running costs		
England & Wales	EU Directive 2002/91/EC	