



OFFERS OVER

£310,000

Stafford Lane

Hednesford, WS12 1LL

PROPERTY SUMMARY

Extended Three Bedroom Detached Home on Stafford Lane, Hednesford

Situated on Stafford Lane in the popular town of Hednesford, this stylish detached home combines generous living space with a modern, family-friendly layout. Offering over 1,400 sq. ft. of accommodation, the property features three well-proportioned bedrooms, making it perfect for families, professionals, or those needing extra space for guests or a home office.

3



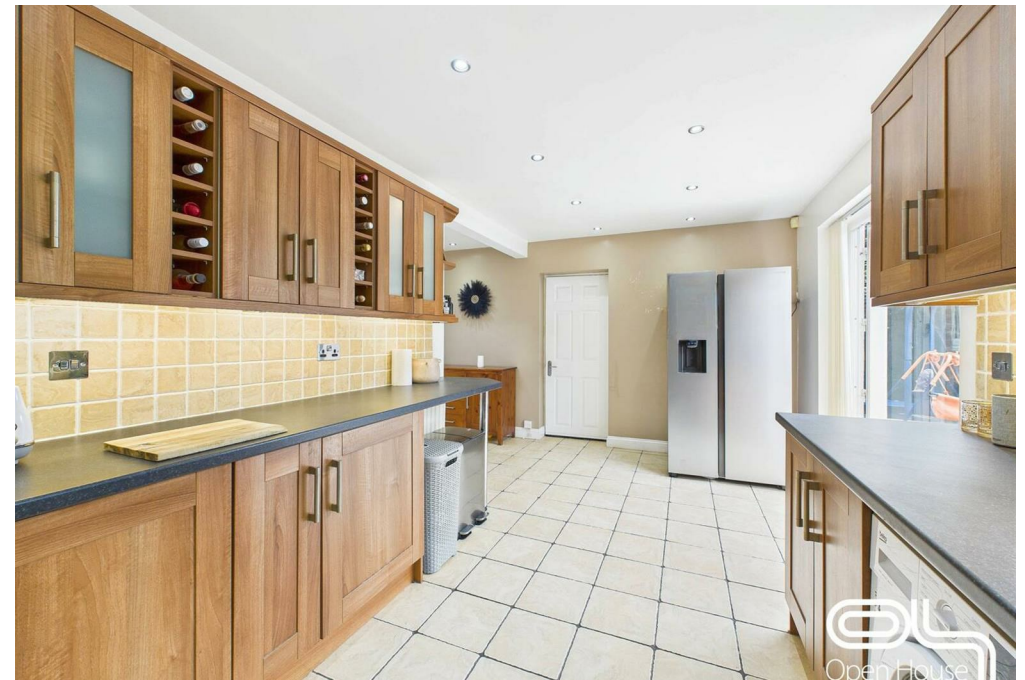
1



1









LOCAL AUTHORITY

TENURE
Freehold

COUNCIL TAX BAND
D

VIEWINGS
By prior appointment only



Energy Efficiency Rating		
	Current	Potential
Very energy efficient - lower running costs		
(92 plus) A		84
(81-91) B		
(69-80) C	72	
(55-68) D		
(39-54) E		
(21-38) F		
(1-20) G		
Not energy efficient - higher running costs		
England & Wales	EU Directive 2002/91/EC	

Agents Note: Whilst every care has been taken to prepare these particulars, they are for guidance purposes only. All measurements are approximate and are for general guidance purposes only and whilst every care has been taken to ensure their accuracy, they should not be relied upon and potential buyers/tenants are advised to recheck the measurements



Open House Staffordshire