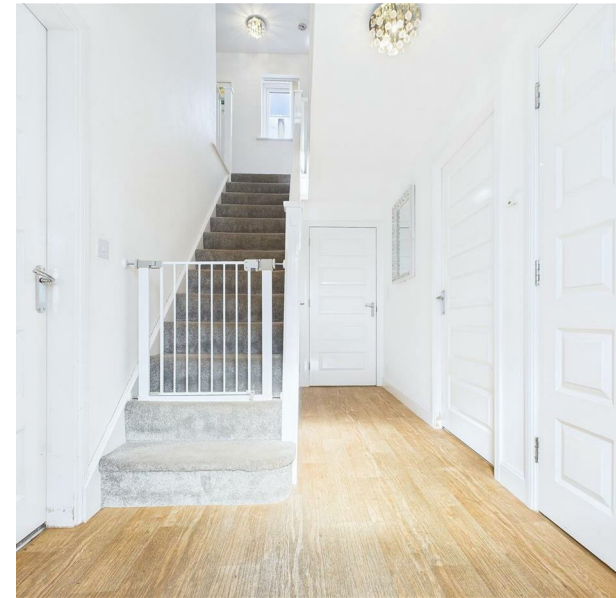


Sunderland Close, Church Gresley, DE11 9GW

£338,000

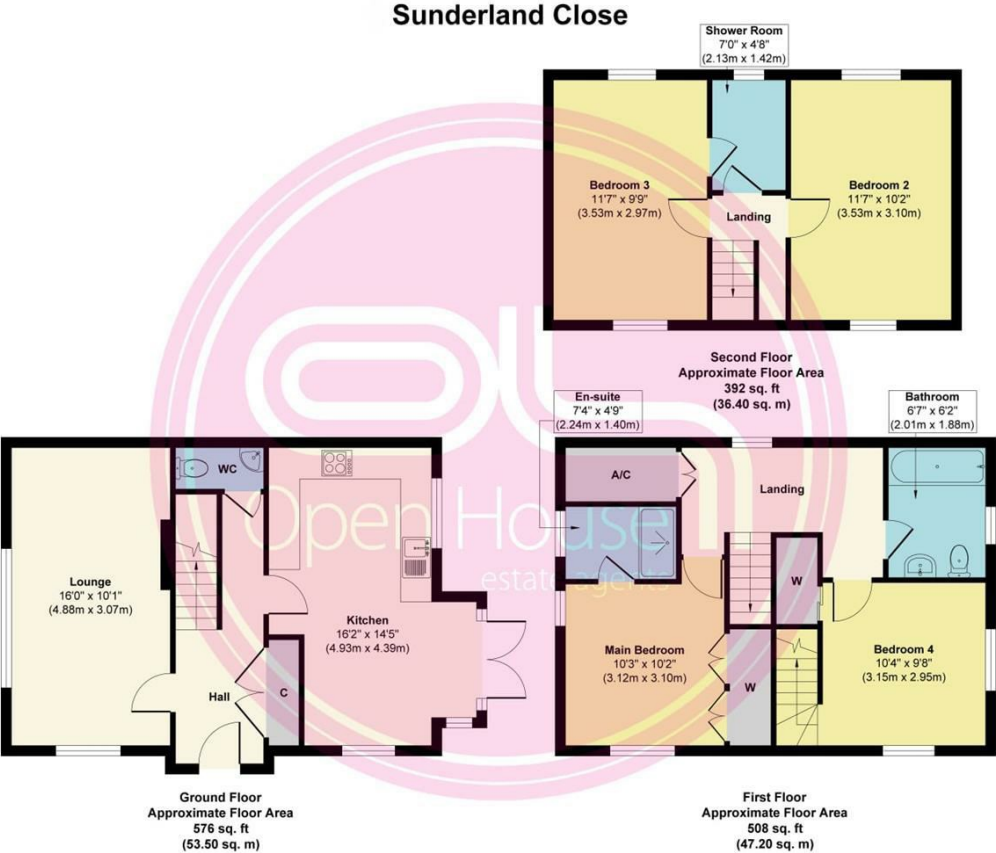
Council Tax Band: D



Set in a peaceful cul-de-sac on Sunderland Close, Church Gresley, this impressive three-storey detached home offers especially large and versatile living space, ideal for growing families. Its location provides easy access to scenic woodland walks and the nearby National Forest, while still being close to well-regarded schools, village amenities, and excellent transport routes via the A444, A511 and M42. The end of the cul-de-sac there is a grass and seated area, as well as walks through woodland and green space.



Open House Burton & Swadlincote



Approx. Gross Internal Floor Area 1,476 sq. ft / 137.10 sq. m.

Illustration for identification purposes only, measurements are approximate and not to scale, unauthorised reproduction is prohibited.



Energy Efficiency Rating		
	Current	Potential
Very energy efficient - lower running costs		
(92 plus) A		88
(81-91) B		
(69-80) C	79	
(55-68) D		
(39-54) E		
(21-38) F		
(1-20) G		
Not energy efficient - higher running costs		
England & Wales	EU Directive 2002/91/EC	