

Potters Croft, Horsham, RH13 5LR

Asking Price £550,000

Council Tax Band: D

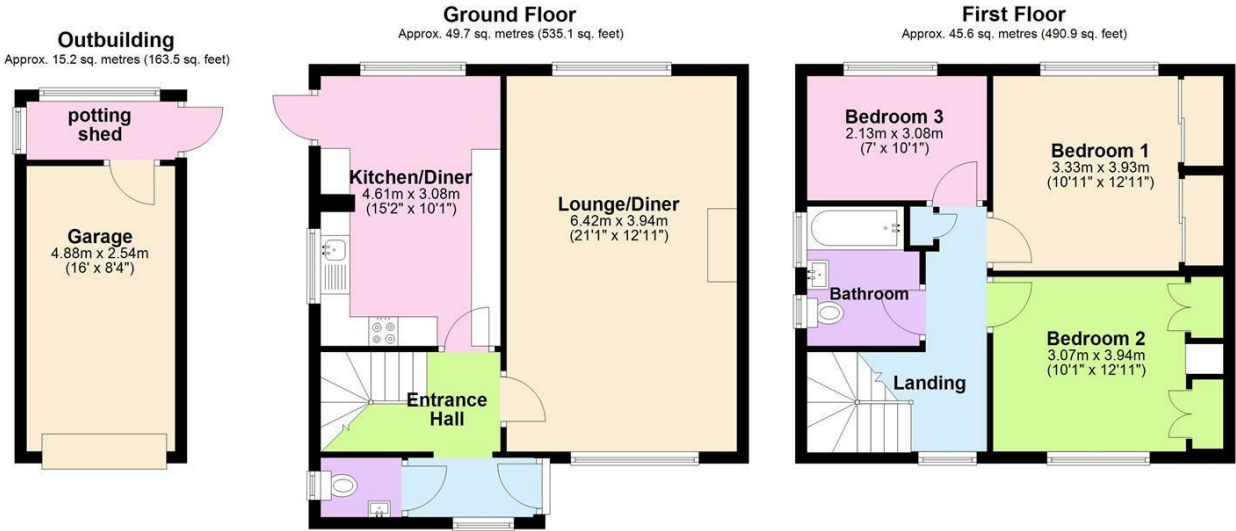


LOCATION

We are delighted to bring to the market, this spacious, well-presented three bedroom semi-detached property in a highly convenient location in Horsham. Positioned at the end of a quiet cul-de-sac, on a very generous corner plot, this property is less than a 10 minute walk to Horsham mainline station and just under a mile, or a 20 minute walk, to Horsham town centre with its wealth of shops, restaurants and cafes.



Open House Horsham



Total area: approx. 110.5 sq. metres (1189.5 sq. feet)
Potters Croft



Energy Efficiency Rating		
	Current	Potential
Very energy efficient - lower running costs		
(92 plus) A		
(81-91) B		
(69-80) C		
(55-68) D	65	72
(39-54) E		
(21-38) F		
(1-20) G		
Not energy efficient - higher running costs		
England & Wales	EU Directive 2002/91/EC	