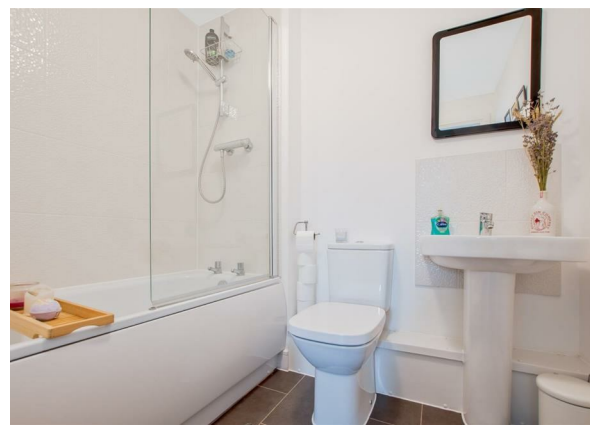


**Claudius Walk, Northstowe, CB24 1BL**

**£1,350 Per Month**

**Council Tax Band: B**





This charming two-bedroom apartment is ideally situated in the highly desirable area of Northstowe. Designed to maximise natural light, the apartment features a stylish open-plan layout perfect for modern living. The contemporary kitchen comes equipped with a range of integrated appliances, including a fridge/freezer, gas stove and oven, dishwasher, and washer/dryer. The generously sized sitting room provides a welcoming space for both entertaining guests and relaxing on cooler evenings. Additionally, the apartment features a delightful L-shaped balcony, providing ample space to enjoy the sunshine and a refreshing breeze on warm, sunny days.

The property includes two well-appointed bedrooms and two bathrooms. The master bedroom is a spacious double with a Juliet balcony accessed via French doors, and an en-suite bathroom featuring a walk-in shower, washbasin, and WC. The second double bedroom offers a comfortable and cozy environment, with carpeting throughout.

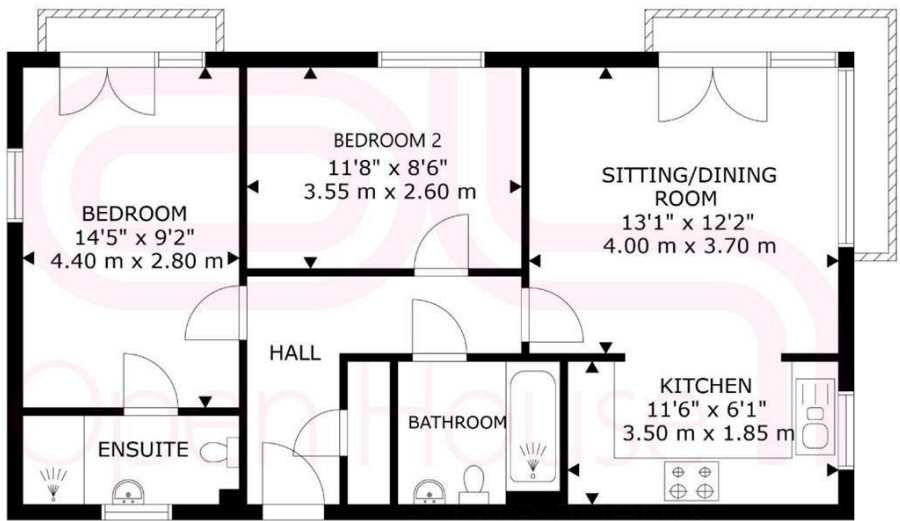
Hallway

- Laminated flooring
- With a cloakroom leading to:

Kitchen (3.50m x 1.85m)

- Open plan with laminated flooring
- u-shaped worktop
- Built-in fridge/freezer, gas hob and oven, and dishwasher
- Natural light through the double glazing

Sitting/Dining Room (4.00m x 3.70m)



GROSS INTERNAL AREA  
APARTMENT: 646 sq ft, 60 m²  
TOTAL: 646 sq ft, 60 m²



Open House Cambridgeshire



Energy Efficiency Rating		
	Current	Potential
Very energy efficient - lower running costs		
(92 plus) <b>A</b>		
(81-91) <b>B</b>	87	87
(69-80) <b>C</b>		
(55-68) <b>D</b>		
(39-54) <b>E</b>		
(21-38) <b>F</b>		
(1-20) <b>G</b>		
Not energy efficient - higher running costs		
England & Wales	EU Directive 2002/91/EC	