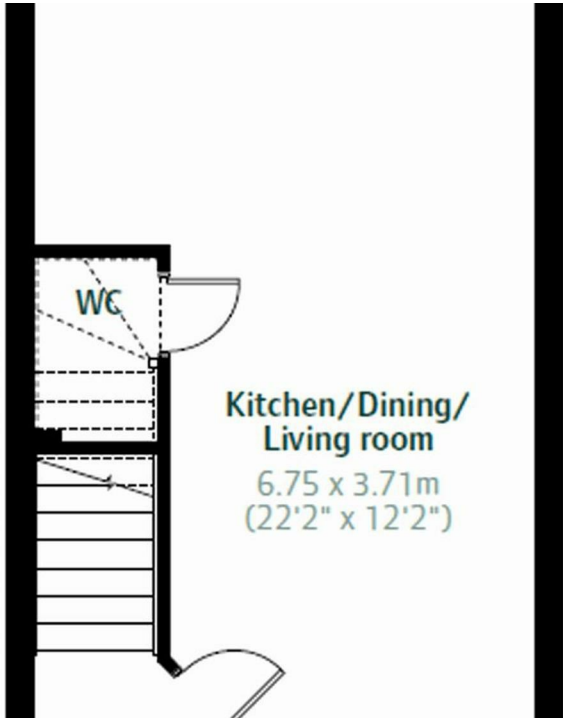
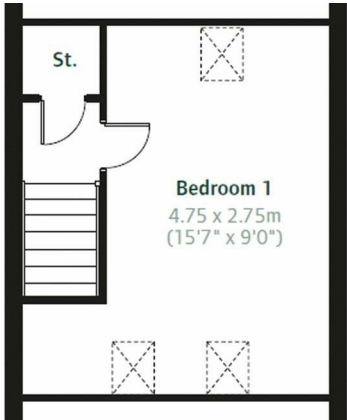
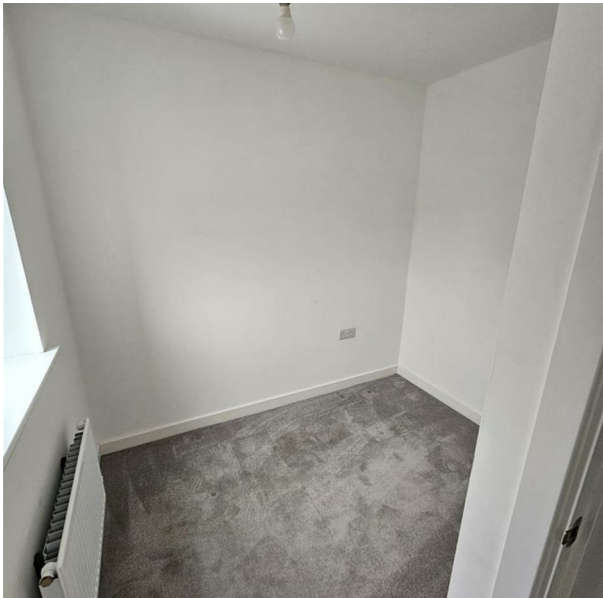


Brookes Lane, Hemlington, TS8 9GE  
£900  
Council Tax Band:



\*Modern Three Storey Terraced House Available for Rent\*\*Excellent Condition\*\*Extremely Popular Location\*\*Built in 2021\*\*Three Bedrooms\*\*Modern Fitted Kitchen\*\*Downstairs Toilet\*\* Modern Family Bathroom\*\*Parking for Two Cars\*\*Enclosed Rear Garden\*\*Double Glazing\*\*EPC B\*\*Council Tax C\*\*Available 1st August 2025\*

This delightful three-bedroom house offers a perfect blend of modern living and comfort. Built in 2021, the property is in excellent condition, making it an ideal choice for families or professionals.

Upon entering, you are welcomed into a spacious living and kitchen area that provides a warm and inviting atmosphere.

The modern kitchen includes a range of fitted base and wall units with matching work surfaces and tiled splashbacks. Appliances to include: a single electric oven; a four-ring gas hob with a concealed extractor hood and plumbing for a washing machine. French-style double-glazed doors open onto the rear garden. There is also a downstairs toilet.

The three bedrooms are generously sized (two double and one single) allowing for ample natural light. The modern bathroom is in excellent condition.

The property benefits from parking for two cars and a private enclosed rear garden.

This property is a wonderful opportunity for those looking to settle in a modern home with all the conveniences of contemporary living. Available from 1st August 2025



Open House Birmingham North West



Energy Efficiency Rating		
	Current	Potential
Very energy efficient - lower running costs		
(92 plus) <b>A</b>	83	
(81-91) <b>B</b>		
(69-80) <b>C</b>		
(55-68) <b>D</b>		
(39-54) <b>E</b>		
(21-38) <b>F</b>		
(1-20) <b>G</b>		
Not energy efficient - higher running costs		
England & Wales		EU Directive 2002/91/EC
		