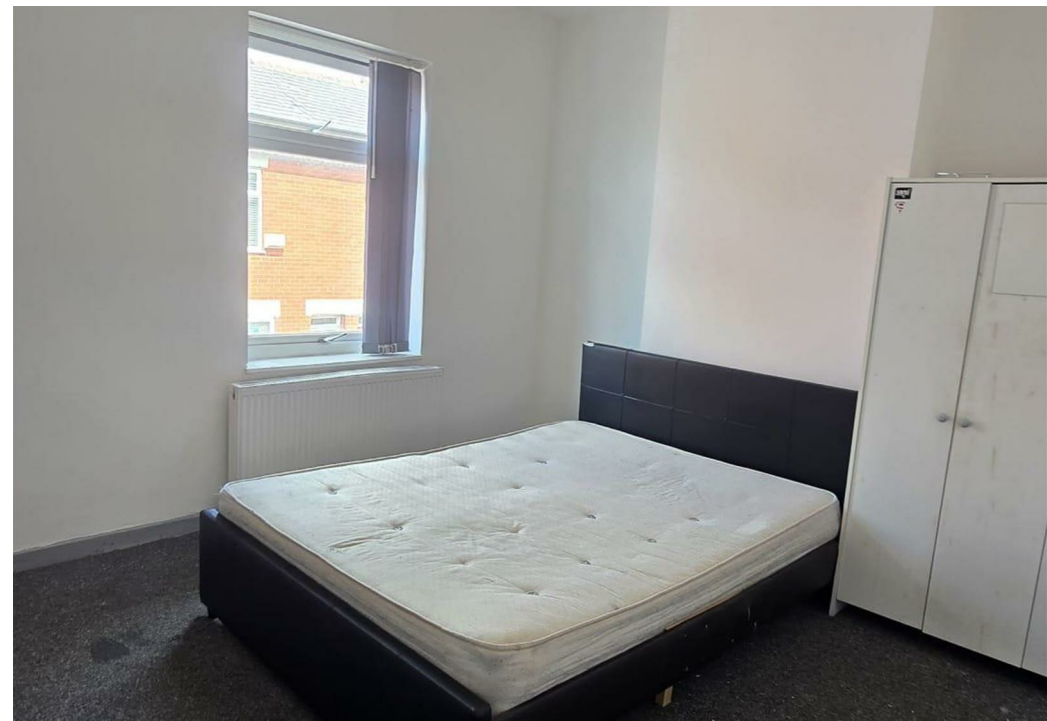
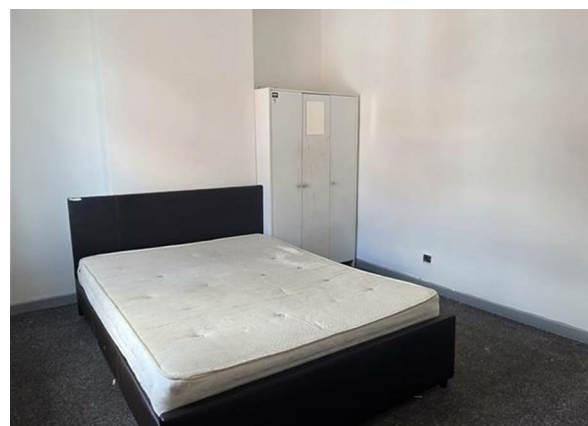
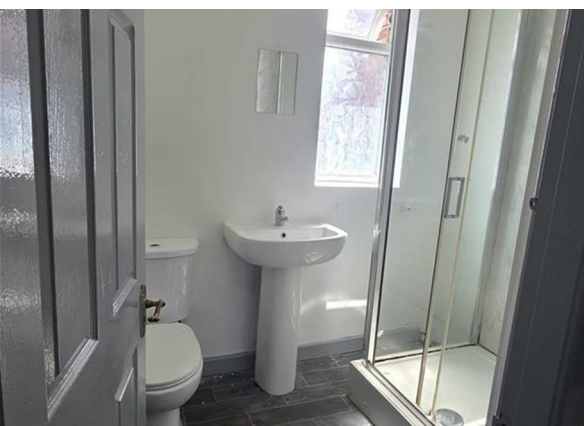
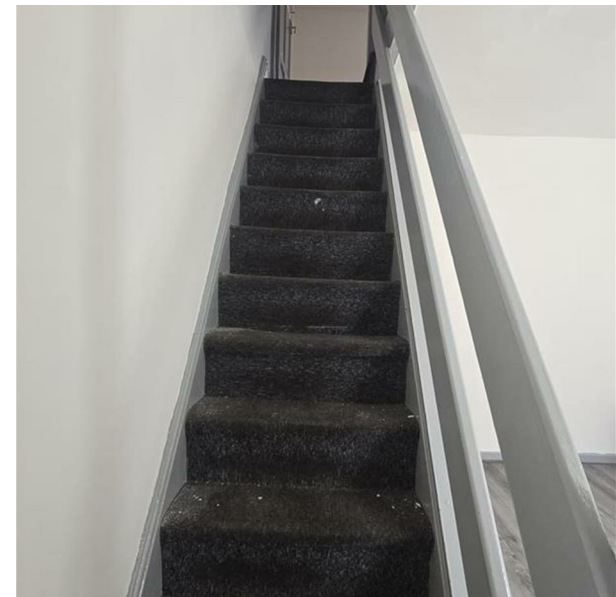


Orrel Street, Salford, M6 5TD

£1,200 Per Month

Council Tax Band: A



Nestled on the charming Orrel Street in Salford, this delightful end terrace house offers a perfect blend of character and modern living. Built in 1905, the property boasts a rich history while providing a comfortable and inviting atmosphere for its residents. Spanning an impressive 840 square feet, this home features two well-proportioned reception rooms, ideal for both relaxation and entertaining guests.

The two bedrooms are thoughtfully designed, providing ample space for rest and personalisation. The bathroom is conveniently located, ensuring ease of access for all occupants. The layout of the house promotes a sense of flow, making it a practical choice for families or professionals seeking a cosy yet functional living space.

Situated in a vibrant community, this property is well-connected to local amenities and transport links, making it an excellent choice for those who appreciate both convenience and a sense of community. Whether you are looking to make this your first home or seeking an investment opportunity, this end terrace house on Orrel Street is sure to impress with its charm and potential. Don't miss the chance to view this lovely property and envision your future in this delightful Salford location.



Open House South Manchester

