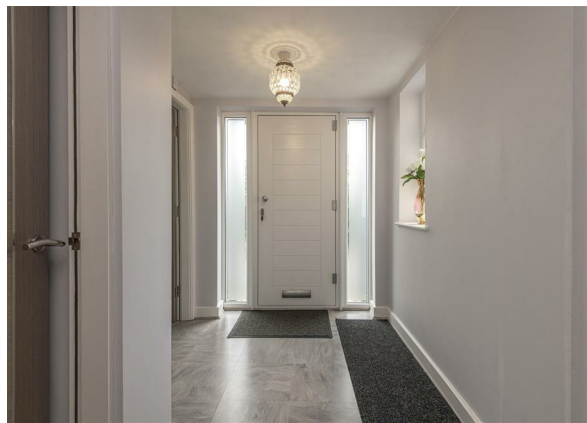


Broomfield Road, Fixby, West Yorkshire, HD2 2HG

Offers Over £850,000

Council Tax Band: F



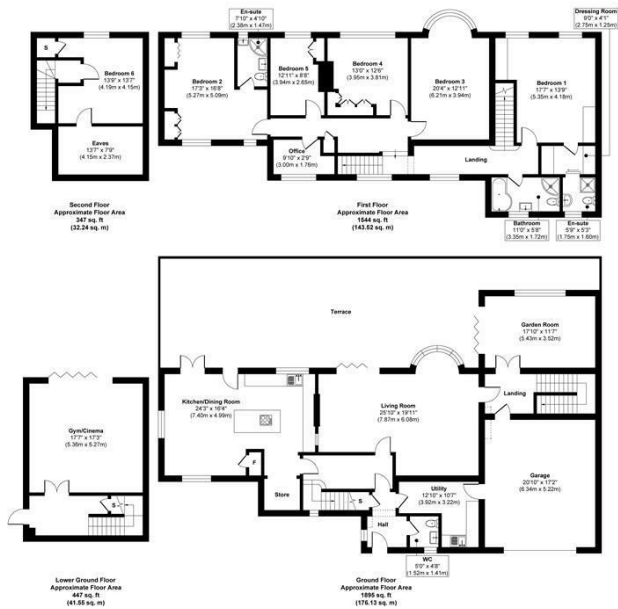
OPEN HOUSE ESTATE AGENTS are proud to present this Substantial 6 Bedroomed Detached Property, located in a very desirable street in the sought after area of Fixby.

This property has been sympathetically extended and now provides 4 floors of living space, including a Lower Level Cinema/Gym/Games room complete with Bi Folding Doors.

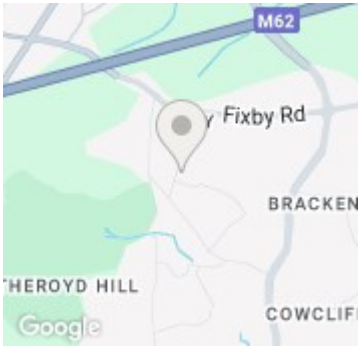
The property briefly comprises:



Open House Huddersfield



Approx. Gross Internal Floor Area 4233 sq. ft / 393.44 sq. m
Illustration for identification purposes only. Measurements are approximate, not to scale.
Produced by Elements Property



| Energy Efficiency Rating | | |
|---|---------|-------------------------|
| | Current | Potential |
| Very energy efficient - lower running costs | | |
| (92 plus) A | | |
| (81-91) B | | |
| (69-80) C | 75 | 79 |
| (55-68) D | | |
| (39-54) E | | |
| (21-38) F | | |
| (1-20) G | | |
| Not energy efficient - higher running costs | | |
| England & Wales | | EU Directive 2002/91/EC |