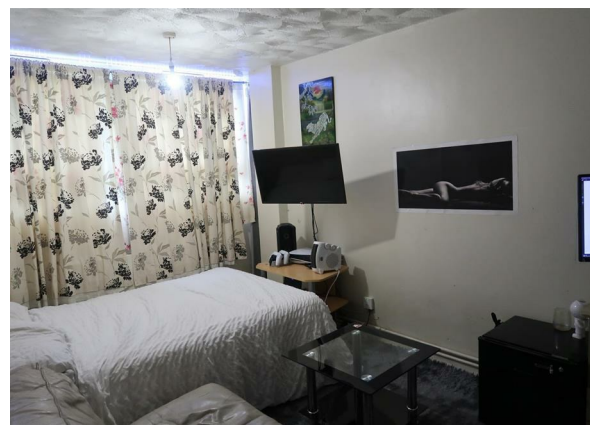
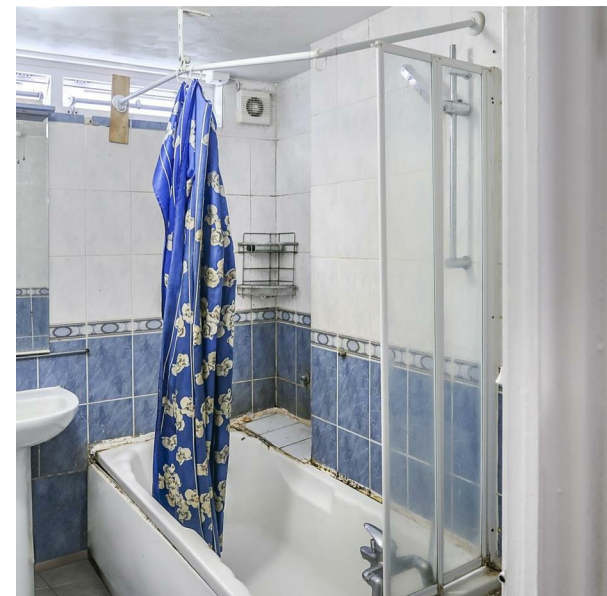


Draper Close, Belvedere, Kent, DA17 5BY
Offers In The Region Of £270,000
Council Tax Band: B



Nestled in the charming area of Draper Close, Belvedere, this delightful maisonette offers a perfect blend of comfort and convenience. Spanning an impressive 926 square feet, the property boasts three well-proportioned bedrooms, making it an ideal choice for families or those seeking extra space. The inviting reception room provides a warm and welcoming atmosphere, perfect for relaxation or entertaining guests.

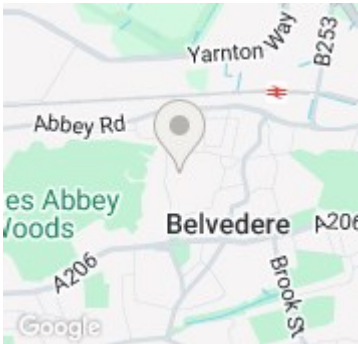
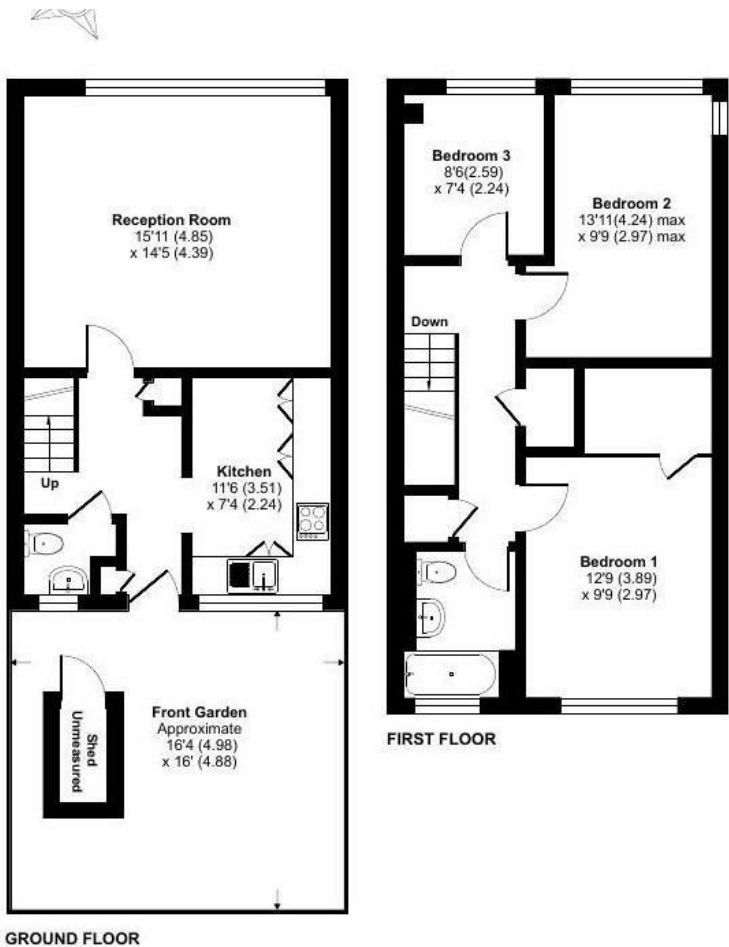
Constructed in 1975, this maisonette has been thoughtfully designed to meet the needs of modern living while retaining its character. The single bathroom is well-appointed, ensuring that daily routines are both practical and pleasant.

One of the standout features of this property is its excellent connectivity. Residents will benefit from easy access to local transport links, making commuting and exploring the surrounding areas a breeze.

In summary, this maisonette in Draper Close presents a wonderful opportunity for those looking to settle in a well-connected and friendly neighbourhood. With its spacious layout and convenient location, it is sure to appeal to a wide range of potential buyers or renters. Don't miss the chance to make this lovely property your new home.



Open House Rochester



Energy Efficiency Rating		
	Current	Potential
Very energy efficient - lower running costs		
(92 plus) A		
(81-91) B		
(69-80) C	69	74
(55-68) D		
(39-54) E		
(21-38) F		
(1-20) G		
Not energy efficient - higher running costs		
England & Wales		
EU Directive 2002/91/EC		