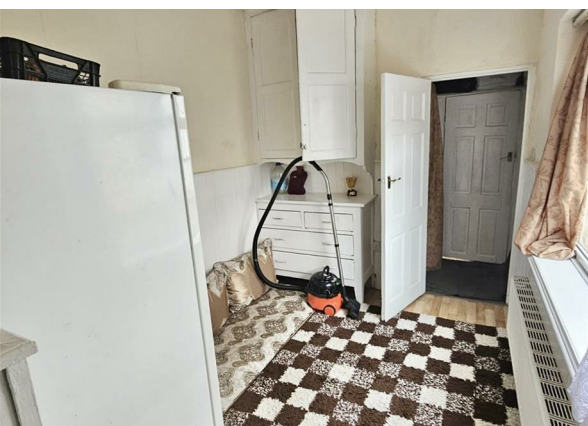
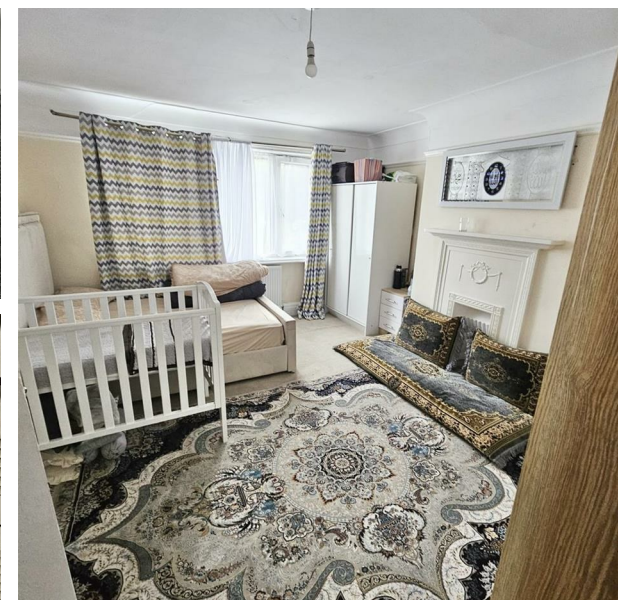
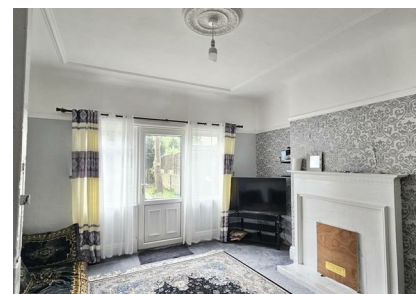


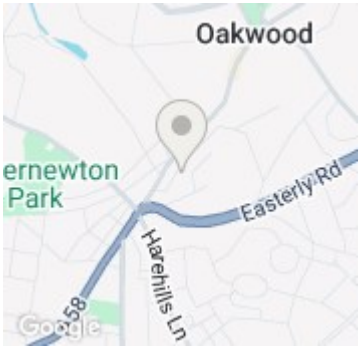
Copgrove Road, Leeds, LS8 2SP
Offers In The Region Of £379,999
Council Tax Band: D



A spacious and charming 5-bedroom semi-detached home located on Copgrove Road, LS8, an ideal spot for families seeking a quiet, established neighbourhood. Offering two generous reception rooms, two bathrooms, and over 1,900 sq. ft of living space, this 1930-built property blends character with potential. Currently rented on a short-term basis, the property offers flexibility for the new owner to retain the tenant or receive vacant possession. Priced at £379,999, this is a fantastic opportunity in a sought-after Leeds location.



Open House Leeds Central



Energy Efficiency Rating		
	Current	Potential
Very energy efficient - lower running costs		
(92 plus) A		
(81-91) B		
(69-80) C		
(55-68) D		
(39-54) E	49	
(21-38) F		
(1-20) G		
Not energy efficient - higher running costs		
England & Wales	EU Directive 2002/91/EC	