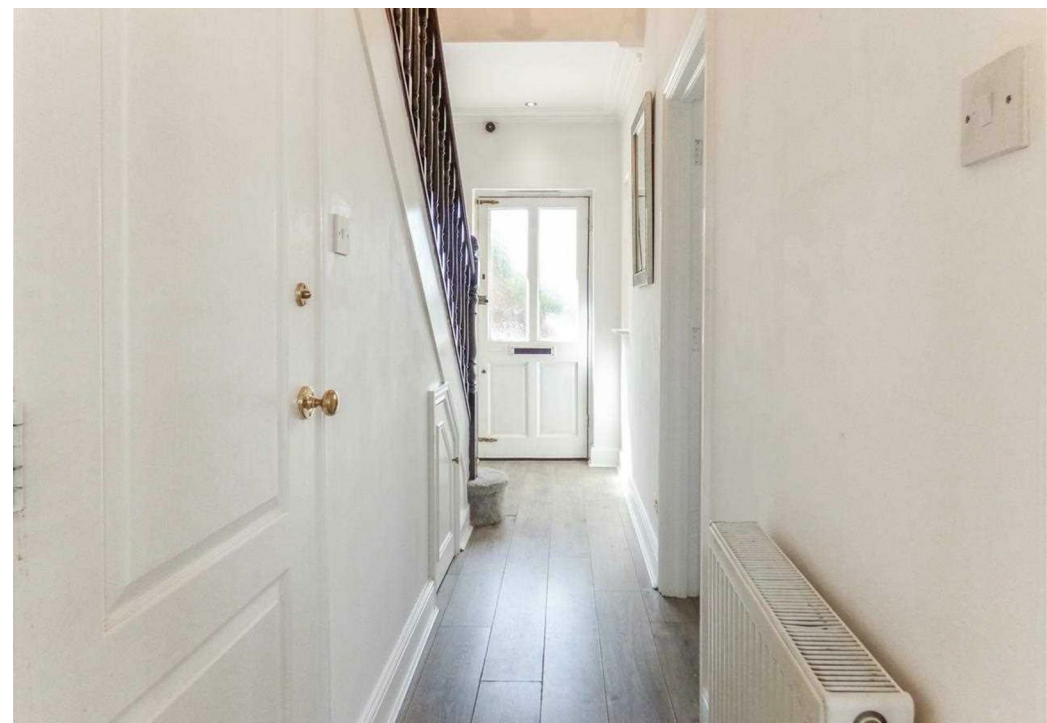
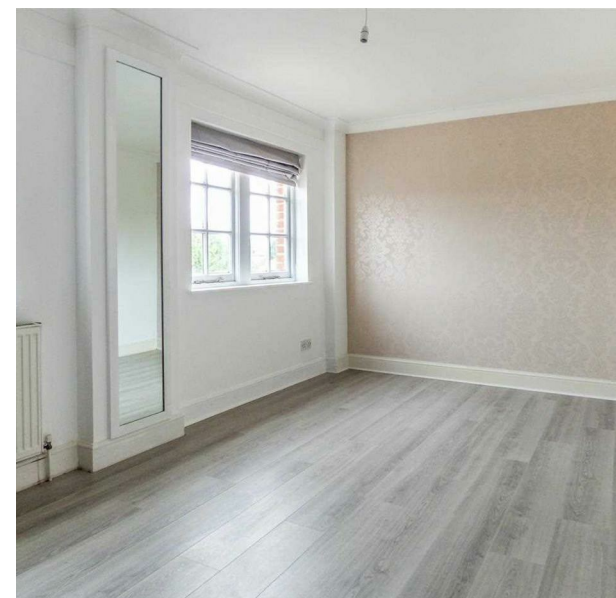
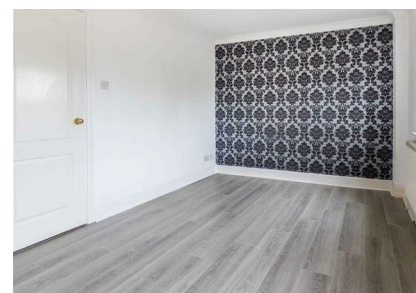


**Elmbridge Hall, Fyfield, Ongar, Essex, CM5 0TN**

**£1,800 Per Month**

**Council Tax Band: E**



A rarely available opportunity to live in a prestigious property located within the grounds of a converted Victorian school. A three bedroom town house, with impressive high vaulted ceilings and sash windows, fully managed communal areas, a private courtyard garden and allocated parking, for anyone with an eye for style, internal viewing is a must.

Elmbridge Hall is a former Victorian boarding school dating back to c.1884, situated in ten acres of private grounds available only to residents, in the idyllic countryside village of Fyfield, two miles from Ongar town centre with its range of local shops, restaurants and bars. Epping station is just 8.5 miles approx. (Zone 6) and excellent road links are available in all directions



Open House Brentwood

