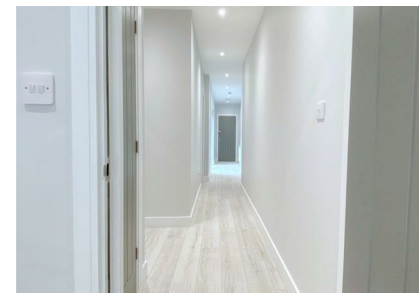


Flat 2, Dunstable Place, Luton, LU1 2QT

£1,195 Per Month

Council Tax Band: A



Welcome to this exquisite second-floor flat located in the heart of Luton Town. This contemporary apartment boasts a stylish open-plan kitchen and living space, perfect for modern living and entertaining. The kitchen is equipped with integrated appliances, ensuring convenience and functionality, while a separate laundry area adds to the practicality of the home.

The flat features two well-proportioned bedrooms, providing ample space for relaxation and rest. The bathroom is elegantly designed, complementing the high specification and contemporary finish that runs throughout the property. The stunning marble effect adds a touch of luxury, making this flat a truly inviting space.

One of the standout features of this property is its prime location. Situated close to the town centre, residents will enjoy easy access to a variety of shops, restaurants, and local amenities. For those who commute, the nearby train station and excellent motorway links make travel straightforward, whether for work or leisure. Additionally, the proximity to the airport adds an extra layer of convenience for frequent travellers.

This flat is an excellent choice for individuals or couples seeking a modern living space in a vibrant area. With its spacious layout and strategic location, it promises a lifestyle that balances comfort with accessibility. Viewings are highly recommended - call today to book a viewing! Lines open 24 hours



Open House Luton



Energy Efficiency Rating		
	Current	Potential
Very energy efficient - lower running costs		
(92 plus) A		
(81-91) B		
(69-80) C	78	78
(55-68) D		
(39-54) E		
(21-38) F		
(1-20) G		
Not energy efficient - higher running costs		
England & Wales	EU Directive 2002/91/EC	