

**Beaver Close, Horsham, RH12 5GB**  
**£2,400 Per Calendar Month**  
**Council Tax Band: E**



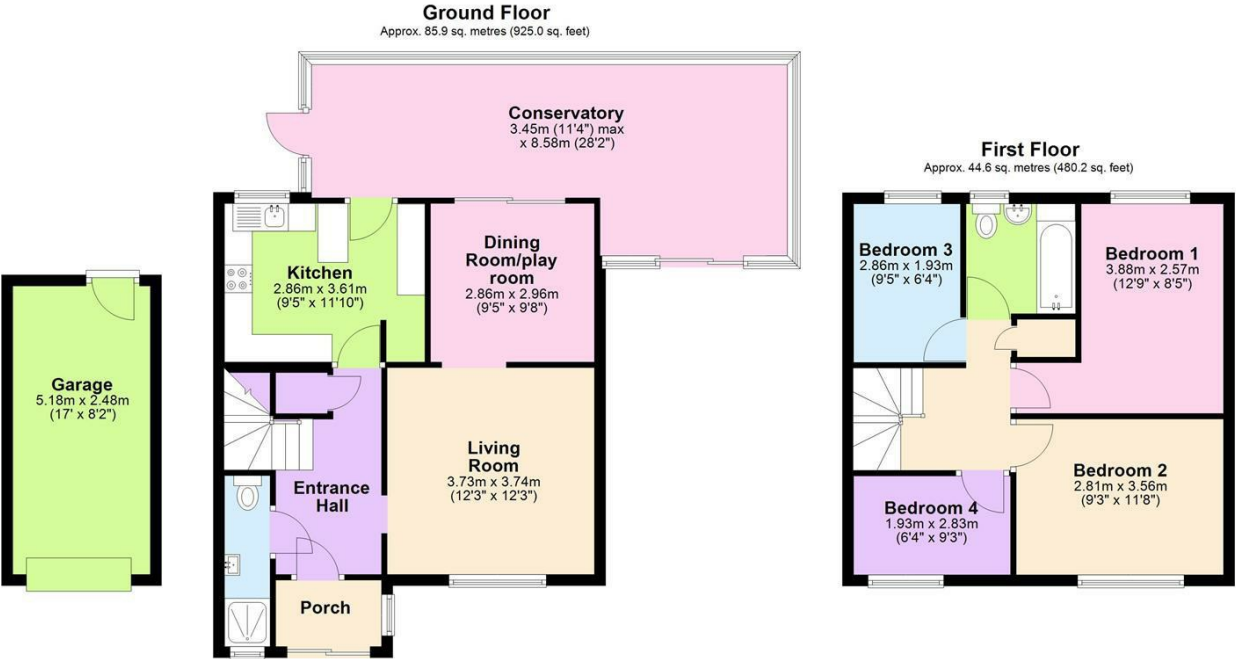


LOCATION

We are delighted to bring to the market this four bedroom, family home in a quiet cul-de-sac location in North Horsham. It's less than a 10 minute walk to Littlehaven station, with its regular trains for London Victoria and London Bridge, and just under two miles to Horsham town centre with its wealth of shops, cafes and restaurants. It is also within walking distance of Bohunt secondary school and a number of primary schools including North Heath Lane and Holbrook.



Open House Horsham



Total area: approx. 130.6 sq. metres (1405.2 sq. feet)  
**Beaver Close**



Energy Efficiency Rating		
	Current	Potential
Very energy efficient - lower running costs		
(92 plus) <b>A</b>		<b>84</b>
(81-91) <b>B</b>		
(69-80) <b>C</b>		
(55-68) <b>D</b>	<b>63</b>	
(39-54) <b>E</b>		
(21-38) <b>F</b>		
(1-20) <b>G</b>		
Not energy efficient - higher running costs		
England & Wales		
EU Directive 2002/91/EC		