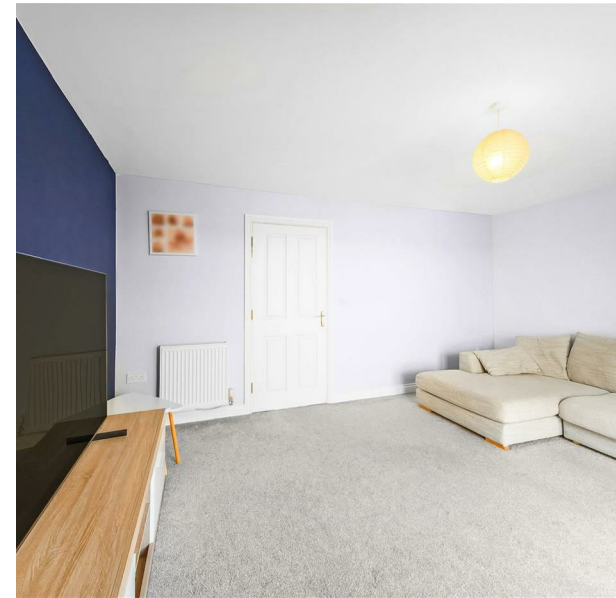


Bank Street, Castle Gresley, DE11 9LB

£230,000

Council Tax Band: C

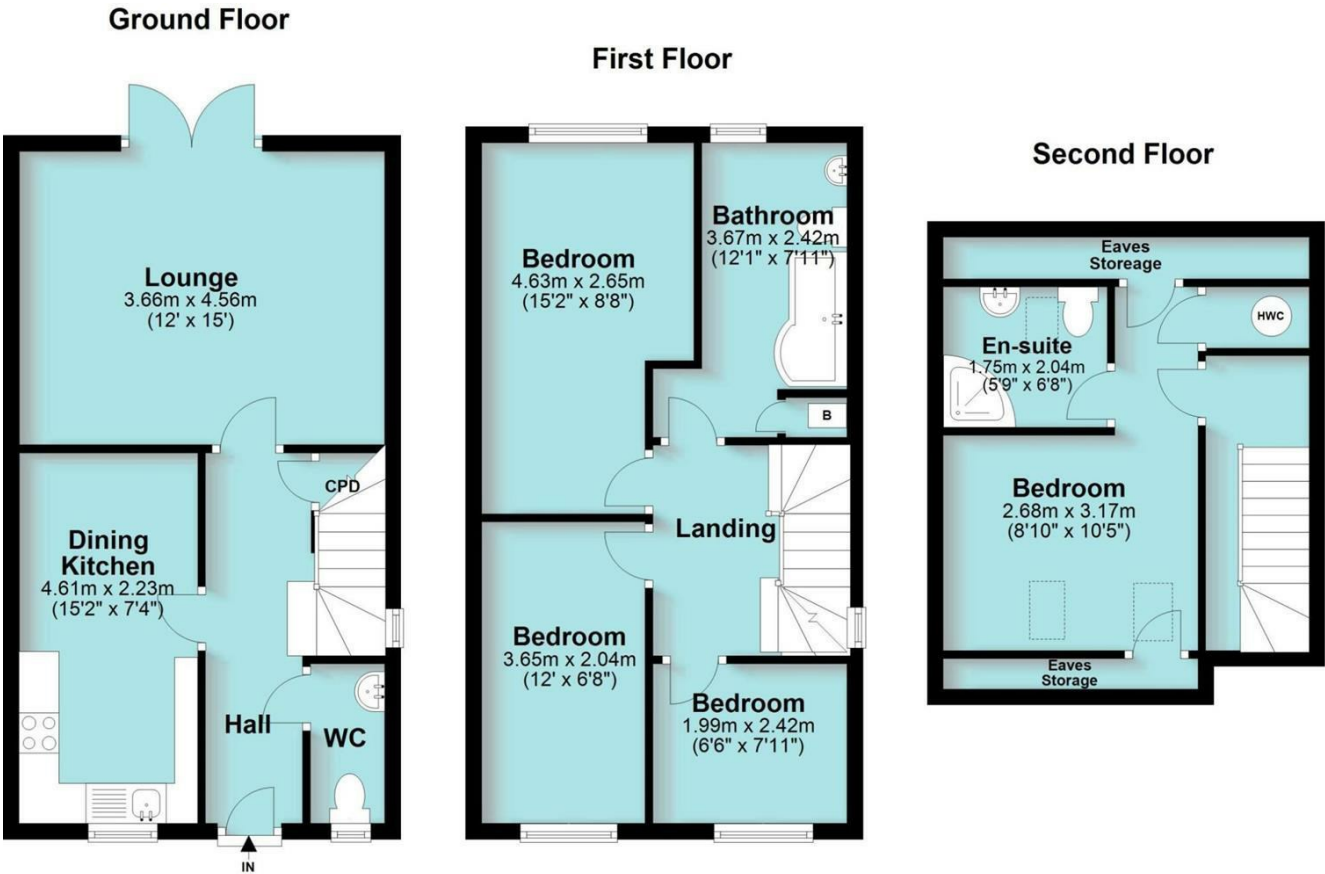


Situated in the heart of Castle Gresley, this deceptively spacious four-bedroom semi-detached home offers modern, flexible living across three floors. With over 1,000 sq ft of well-maintained accommodation, the property is ideal for growing families seeking a move-in-ready home with both great local amenities and countryside walks nearby.

In brief, this attractive property boasts a modern kitchen diner, spacious lounge, and convenient cloaks WC. The first floor houses three well-sized bedrooms and the family bathroom, and up to the second floor is the master suite. Externally the home enjoys a slightly elevated plot, a generous block-paved driveway, as well as a private and low-maintenance rear garden.



Open House Burton & Swadlincote



Total area: approx. 101.9 sq. metres (1096.8 sq. feet)



Energy Efficiency Rating		
	Current	Potential
Very energy efficient - lower running costs		
(92 plus) A		89
(81-91) B		
(69-80) C	78	
(55-68) D		
(39-54) E		
(21-38) F		
(1-20) G		
Not energy efficient - higher running costs		
England & Wales	EU Directive 2002/91/EC	