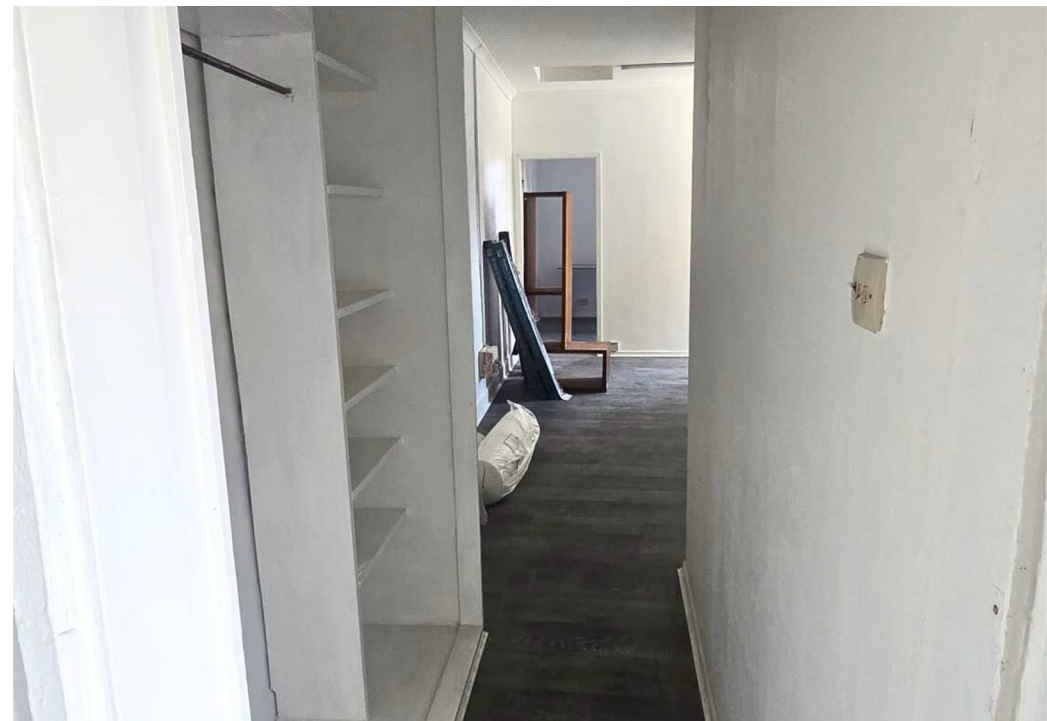


High Street, Golborne, WA3 3BU

£750 Per Month

Council Tax Band: A



Nestled in the heart of Golborne, this charming flat on High Street offers a delightful blend of comfort and convenience. Spanning an impressive 646 square feet, the property features a well-appointed reception room that serves as the perfect space for relaxation or entertaining guests.

The flat comprises two inviting bedrooms, providing ample space for a small family or professionals seeking a comfortable living arrangement. The bathroom is thoughtfully designed, ensuring both functionality and style.

Living on the High Street means you are just a stone's throw away from local amenities, shops, and transport links, making daily life both easy and enjoyable. This property is ideal for those looking to embrace a vibrant community while enjoying the tranquillity of a well-maintained flat.

Whether you are a first-time buyer or seeking a rental opportunity, this flat presents an excellent choice in a sought-after location. Do not miss the chance to make this lovely property your new home.



Open House South Manchester

