



OFFERS OVER

£300,000

Cottesmore Close

Great Sankey, WA5 3UN

PROPERTY SUMMARY

Nestled in the desirable area of Great Sankey, Cottesmore Close presents an exceptional opportunity to acquire a modern mid-terrace house. This charming three-bedroom townhouse offers ample space for comfortable living.

Upon entering, you are welcomed into a well-appointed reception room, perfect for both relaxation and entertaining. The property boasts three generously sized bedrooms, providing plenty of room for family or guests. With three bathrooms, including en-suite facilities, convenience and privacy are assured for all occupants.

The exterior of the home features a low-maintenance garden with astro turf to the rear, allowing you to enjoy outdoor space without the hassle of extensive upkeep. Additionally, the property includes a car charging port, catering to the needs of modern living and environmentally conscious residents.

Situated close to Barrow Hall Primary School and Great Sankey High School; this is a perfect location for young and growing families. Not only that but close proximity to motorway links, this home offers excellent connectivity for commuters, making it an

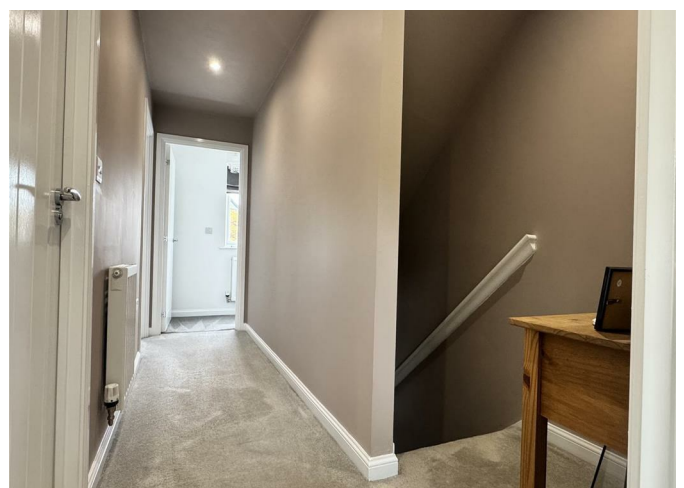
3



3



1








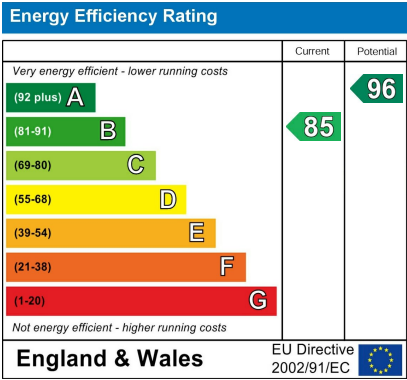


3


3

1



Agents Note: Whilst every care has been taken to prepare these particulars, they are for guidance purposes only. All measurements are approximate and are for general guidance purposes only and whilst every care has been taken to ensure their accuracy, they should not be relied upon and potential buyers/tenants are advised to recheck the measurements



OFFICE ADDRESS

The Hive Sankey Street

Warrington

WA1 1XG

OFFICE DETAILS

01925 987 085

info@real5estates.com

www.real5estates.com