

Burma Close, Dersingham, PE31 6YY

£169,000

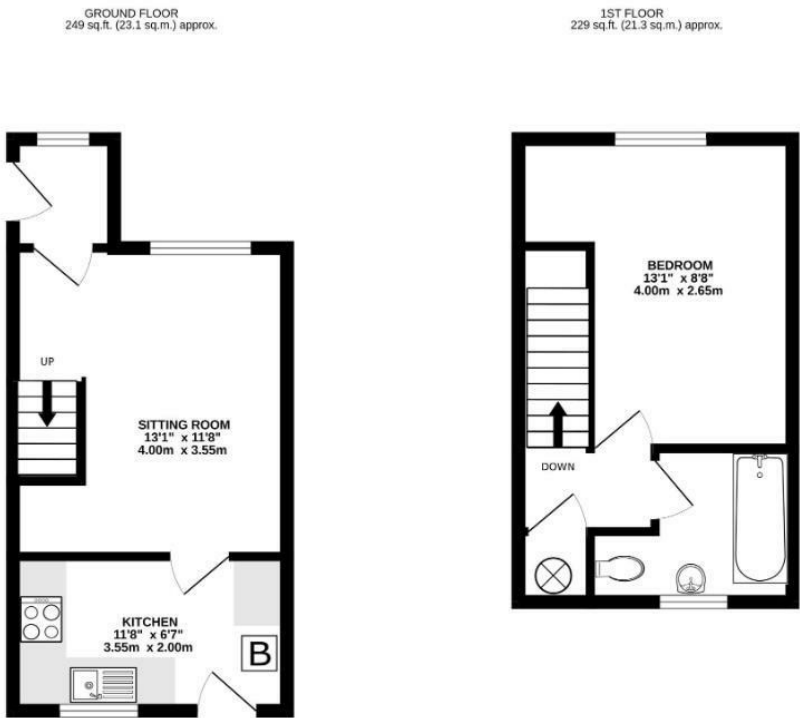
Council Tax Band: A



Nestled in the charming village of Dersingham, this delightful one-bedroom house on Burma Close presents an ideal opportunity for first-time buyers. Built in 1990, the property boasts a compact yet functional layout. Upon entering, you will find a welcoming reception room that offers a perfect space for relaxation and a kitchen located to the rear of the property. The well-appointed bedroom provides a comfortable retreat, with the bathroom next to it which has been recently refurbished by current owners and comprises of a walk in shower, pedestal sink unit and low level wc.



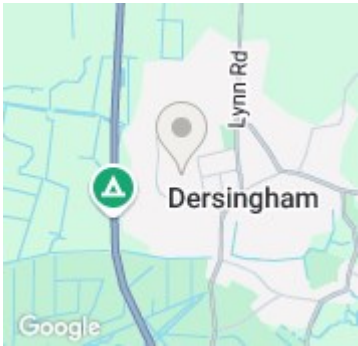
Open House King's Lynn



TOTAL FLOOR AREA : 478 sq.ft. (44.4 sq.m.) approx.

Whilst every attempt has been made to ensure the accuracy of the floorplans contained herein, measurements of doors, windows, rooms and any other items are approximate and no responsibility is taken for any error, omission or mis-statement. This plan is for illustrative purposes only and should be used as such by any prospective purchaser. The services, systems and appliances shown have not been tested and no guarantee as to their operability or efficiency can be given.

Made with floorplan 15023



Energy Efficiency Rating		
	Current	Potential
Very energy efficient - lower running costs		
(92 plus) A		89
(81-91) B		
(69-80) C		64
(55-68) D		
(39-54) E		
(21-38) F		
(1-20) G		
Not energy efficient - higher running costs		
England & Wales		EU Directive 2002/91/EC