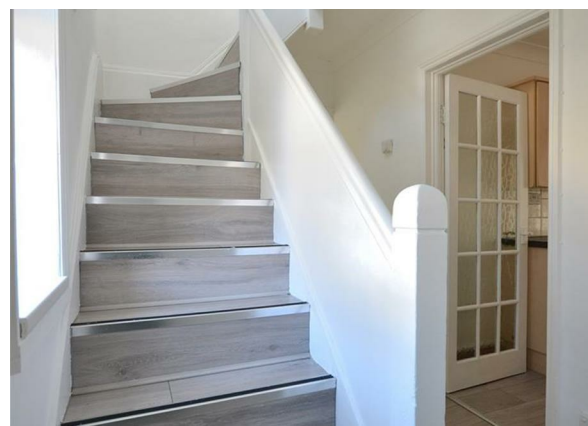


Woodwark Avenue, King's Lynn, PE30 2BA

£185,000

Council Tax Band: A





Open House estate agents are delighted to present this Three Bedroom mid terrace house offered with NO ONWARD CHAIN. Property benefits from UPVC double glazing, gas central heating, three bedrooms, sunroom /utility, Ckls Wc and rear garden.

The house has accommodation briefly comprising: Entrance Hall, Lounge/Diner, Kitchen/breakfast room, Three Bedrooms, Shower room, Enclosed Garden with Patio area and shed. Property conveniently located close to King's Lynn town centre as well as shops, schools and local amenities



Open House King's Lynn

