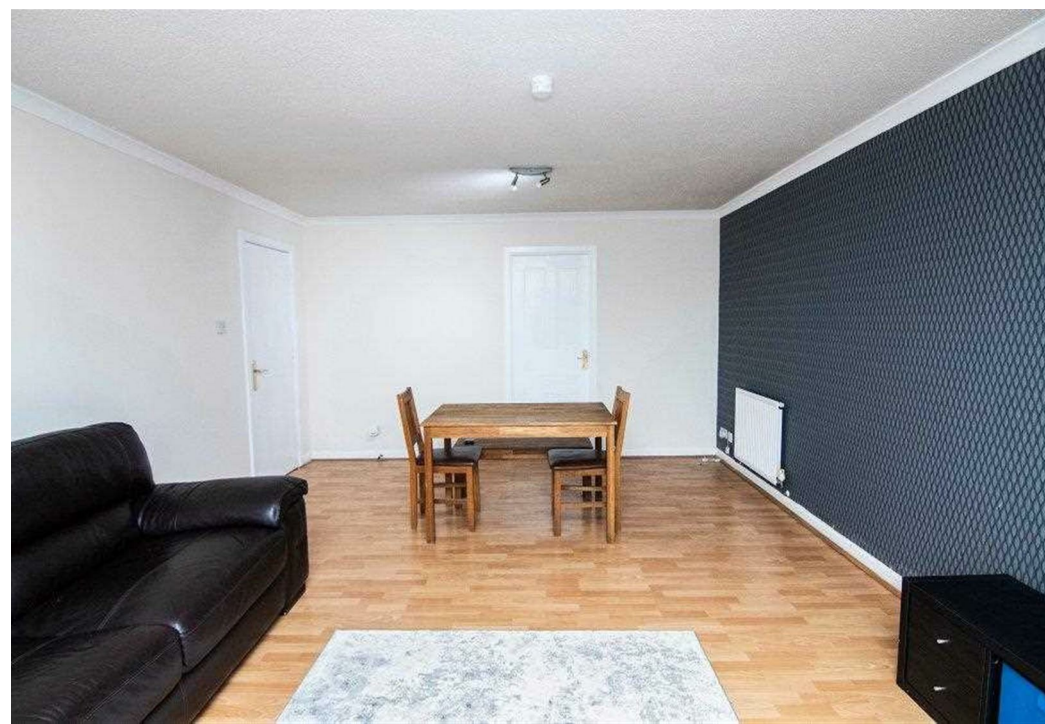
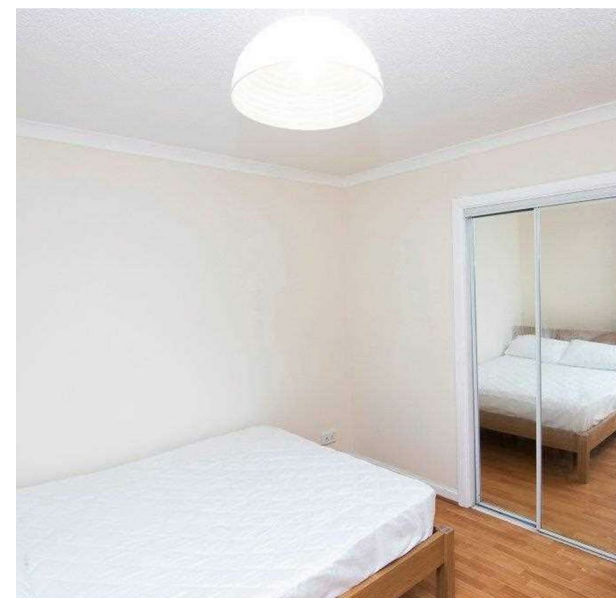


43 Seaview Circle, Bridge Of Don, Aberdeen, Aberdeen, AB23 8RN

£750 Per Month

Council Tax Band: C



BEAUTIFULLY PRESENTED TWO BEDROOMS FLAT –AVAILABLE IMMEDIATELY!!
PART FURNISHED

DELIGHTFUL CITY CENTRE two bedrooms flat on the first floor comprising of a secure entry system, own front door, entrance hallway, spacious bright lounge, kitchen, two double bedrooms, storage cupboard, bathroom with 3-piece suite and shower over bath. This pleasant property has the benefit of UPVC double glazed windows and gas central heating.

The flat affords the opportunity to move in with the minimum of inconvenience and offers a bright airy living environment. Parking is available within the residents parking area. Early viewing is highly recommended

Bridge of Don is a popular residential suburb which lies to the north of Aberdeen City Centre and has an excellent range of amenities of local shops and supermarkets including Asda Superstore, Tesco superstore, everyday shops, primary and secondary schools and health centres. Leisure facilities include community centre with swimming pool, a state-of-the-art private fitness club in nearby Danestone, pleasant river walks at Brig o’ Balcownie and along the estuary at Bridge of Don. The area is convenient for access to Aberdeen International Airport, the oil-related offices at Bridge of Don and Dyce, with a public transport service operating to and from the city centre.

No pets.

Landlord registration - 1556180/100/10032
Scottish Agent Open Register Number LARN1903067



Open House Aberdeen



Energy Efficiency Rating		
	Current	Potential
Very energy efficient - lower running costs		
(92 plus) A		
(81-91) B	81	81
(69-80) C		
(55-68) D		
(39-54) E		
(21-38) F		
(1-20) G		
Not energy efficient - higher running costs		
Scotland	EU Directive 2002/91/EC	