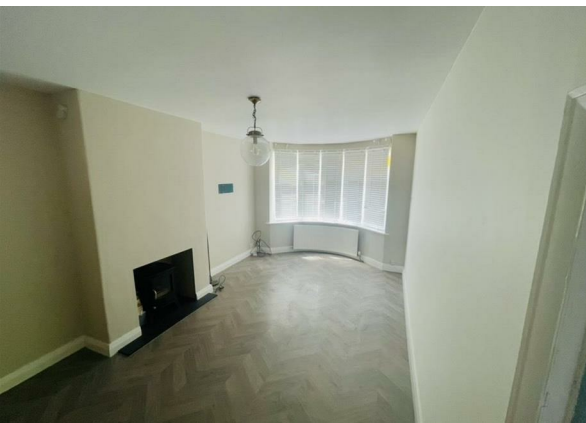


Shadewood Crescent, Grappenhall, WA4 2SN

£1,650

Council Tax Band:



Nestled in the charming area of Grappenhall, Shadewood Crescent presents a delightful opportunity to acquire a well-appointed house that combines classic character with modern living.

The house features three well-proportioned bedrooms, providing ample space for family members or guests. Each room offers a peaceful retreat, ensuring restful nights and rejuvenating mornings. The two bathrooms add convenience, catering to the needs of a busy household.

The location in Grappenhall is particularly appealing, known for its picturesque surroundings and community spirit. Residents can enjoy the benefits of local amenities, including shops, schools, and parks, all within easy reach. The area is well-connected, making commuting to nearby towns and cities straightforward.

In summary, this property on Shadewood Crescent is a wonderful blend of traditional charm and practical living. With its spacious layout, desirable location, and potential for personalisation, it is an excellent choice for those seeking a family home in a sought-after area.



The Hive Sankey Street, Warrington, WA1
1XG
01925 987 085
info@real5estates.com
www.real5estates.com



Energy Efficiency Rating		
	Current	Potential
Very energy efficient - lower running costs		
(92 plus) A		
(81-91) B		
(69-80) C		
(55-68) D		
(39-54) E		
(21-38) F		
(1-20) G		
Not energy efficient - higher running costs		
England & Wales	EU Directive 2002/91/EC	