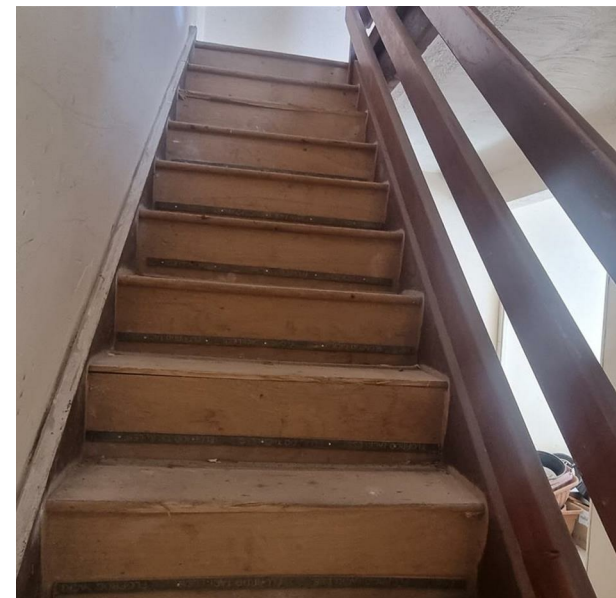


Pasture Street, Grimsby, Grimsby, N E Lincs, DN32 9EP

£275 Per Month

Council Tax Band:



STORAGE UNITE

Availability date: 11 May 2025  
Unfurnished  
Deposit: £250  
Long term let

Features and description

Introducing this spacious storage unit located on Pasture Street in the charming town of Grimsby. This commercial property, spread across two floors, offers a separate electric supply and a secure entrance door at street level for added peace of mind.

Ideal for storage purposes, this unit boasts a generous size, as depicted in the provided images. With a ground floor entrance leading to the first floor, this property provides ample space for all your storage needs.

Situated in a convenient location in Grimsby, residents will enjoy easy access to local amenities and transport links. Nearby points of interest include shops, restaurants, and green spaces, providing a well-rounded living experience.

Don't miss the opportunity to view this property in person. Contact Mayfair today to arrange a viewing. This property is available for long-term lettings from the 11th of May, 2025. Don't delay, secure your storage space today!



Mayfair Estate Agents Powered by Open House



Energy Efficiency Rating		
	Current	Potential
Very energy efficient - lower running costs		
(92 plus) A		
(81-91) B		
(69-80) C		
(55-68) D		
(39-54) E		
(21-38) F		
(1-20) G		
Not energy efficient - higher running costs		
England & Wales	EU Directive 2002/91/EC	