

**Gilligan Close, Horsham, RH12 1UA**

**Asking Price £195,000**

**Council Tax Band: B**





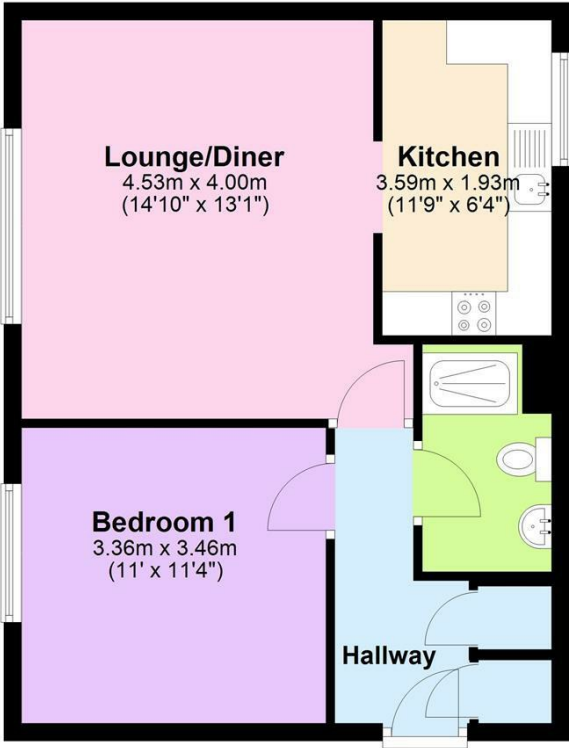
LOCATION

We are delighted to bring to the market this top floor one bed flat on the west side of Horsham within easy access of local shops and amenities. Horsham town centre is within half a mile and offers a comprehensive range of shopping facilities with its wide selection of restaurants, cafes and shops. There is also a CO-OP convenience store less than a 5 minute walk away and a bus stop on a regular bus route that serves the surrounding area. This property would make an ideal rental investment or a first-time purchase.




Open House Horsham

Floor Plan



Total area: approx. 48.1 sq. metres (518.2 sq. feet)  
**Arran Court**



Energy Efficiency Rating		
	Current	Potential
Very energy efficient - lower running costs		
(92 plus) <b>A</b>		
(81-91) <b>B</b>		
(69-80) <b>C</b>		
(55-68) <b>D</b>		
(39-54) <b>E</b>		
(21-38) <b>F</b>		
(1-20) <b>G</b>		
Not energy efficient - higher running costs		
England & Wales		EU Directive 2002/91/EC 