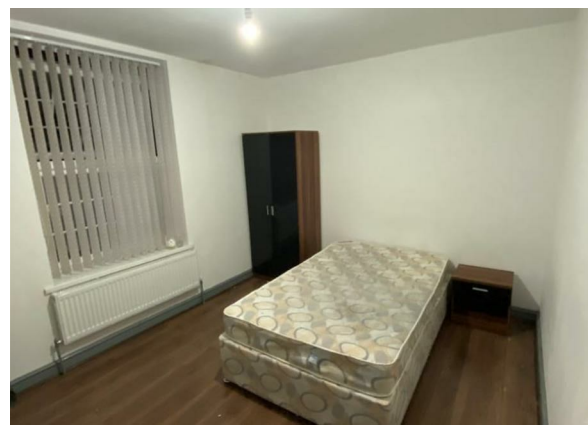
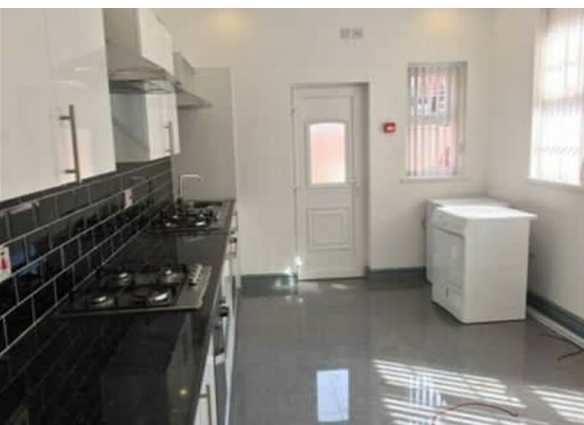


Scarsdale Road, Manchester, M14 5PY

£725 Per Month

Council Tax Band:



*** ROOM TO RENT IN HMO ACCOMMODATION ON SCARSDALE ROAD***

Situated on the charming Scarsdale Road in Manchester, this delightful one-bedroom room offers a unique opportunity for comfortable living in a vibrant area. Ideal for individuals seeking a peaceful retreat, this property is perfect for those who appreciate a blend of convenience and tranquillity.

The room is well-proportioned, providing ample space for relaxation and personalisation. With a thoughtfully designed layout, it allows for a cosy atmosphere, making it an inviting place to unwind after a busy day. The ensuite bathroom is well-maintained, ensuring a pleasant experience for residents.

Situated in a lively neighbourhood, this property benefits from excellent transport links, making it easy to explore all that Manchester has to offer. Local amenities, including shops, cafes, and parks, are just a stone's throw away, providing everything you need within easy reach.

This room is an excellent choice for anyone looking to embrace the Manchester lifestyle, whether you are a student, a young professional, or simply seeking a new place to call home. With its prime location and comfortable living space, this property is not to be missed.

Contact us today to make this room yours.

Open House Estate Agents
4 Mitre Road, Manchester
M13 0NU
0161 225 6926



Open House South East Manchester



| Energy Efficiency Rating | | |
|---|-------------------------|-----------|
| | Current | Potential |
| Very energy efficient - lower running costs | | |
| (92 plus) A | | |
| (81-91) B | | |
| (69-80) C | | |
| (55-68) D | 62 | |
| (39-54) E | | |
| (21-38) F | | |
| (1-20) G | | |
| Not energy efficient - higher running costs | | |
| England & Wales | EU Directive 2002/91/EC | |