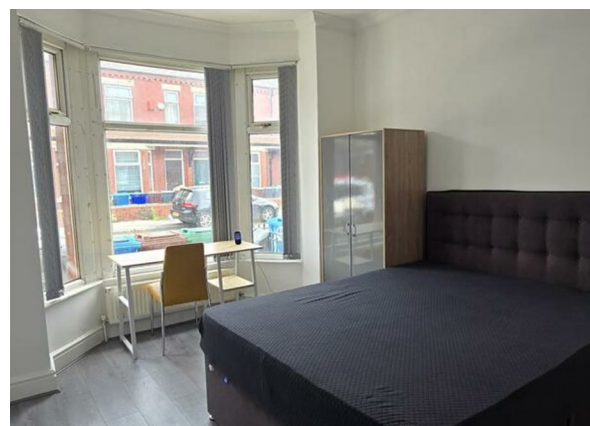
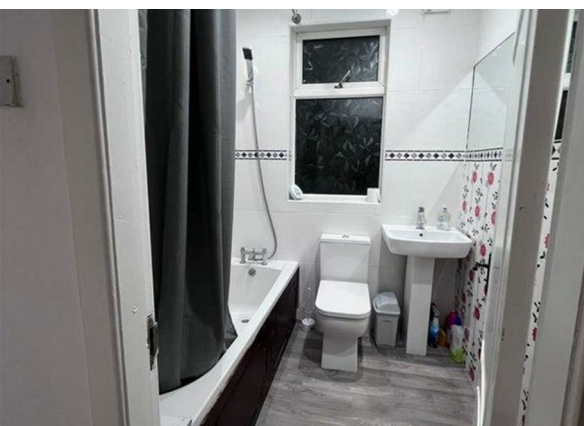
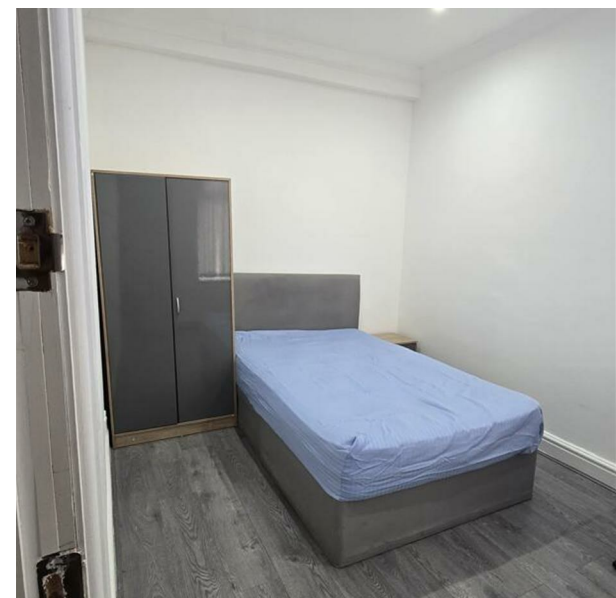
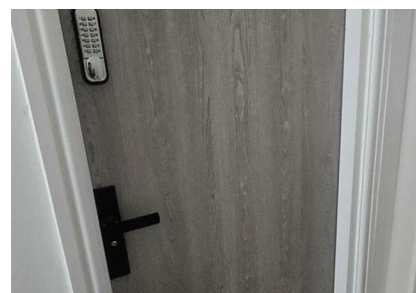


Deramore Street, Manchester, M14 4DU

£3,300 Per Month

Council Tax Band: A

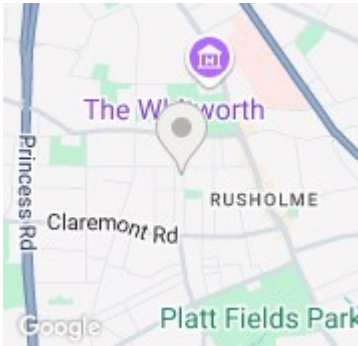


*Spacious 6-Bedroom Terrace House in Rusholme exclusive of Bills *

Welcome to this charming and spacious 6-bedroom terrace house in the heart of Rosham. This well-maintained property offers an ideal living space that combines comfort, convenience, and modern amenities.



Open House South Manchester



Energy Efficiency Rating		
	Current	Potential
Very energy efficient - lower running costs		
(92 plus) A		
(81-91) B		
(69-80) C		
(55-68) D	59	
(39-54) E		
(21-38) F		
(1-20) G		
Not energy efficient - higher running costs		
England & Wales	EU Directive 2002/91/EC	