

Nightingale Row, High Harrington, CA14 4AL

Asking Price £395,000

Council Tax Band: E



Wow! What an incredible property.

Located on the new Whins Farm development at High Harrington, this exceptional, family home has to be viewed to be fully appreciated.

With four double bedrooms, two bathrooms and a sensational kitchen diner, the Robinson is one of Story Homes' most sought after properties. Added to this attractive and practical design, this particular property has had the following upgrades:

AEG Appliances throughout, including Integrated Oven/Microwave combination

Glass Doors, Media Wall and Feature Fires

Karndean Flooring and Bathroom Tiling Upgrades

The absolute heart of this home is the stunning kitchen diner - a fantastic space that takes family meals and entertaining to a different level. The high quality kitchen, complete with island seating, extends into a wonderful snug area, complete with media wall.

A comfortable lounge is complemented by a second reception room, adding to the flexibility of the available space. A separate utility and downstairs toilet completes the ground floor accommodation.

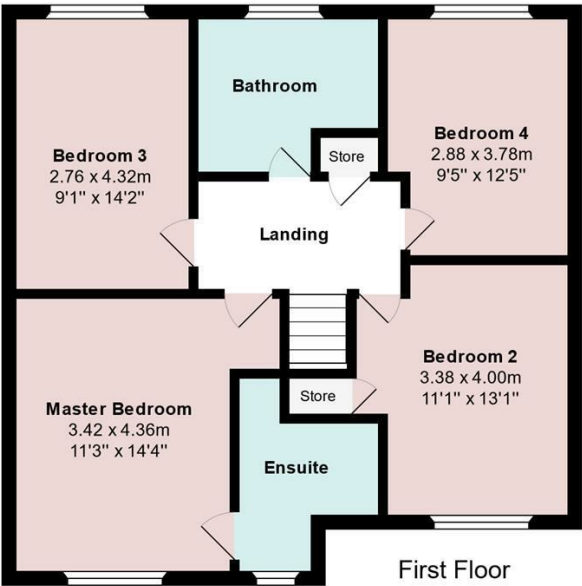
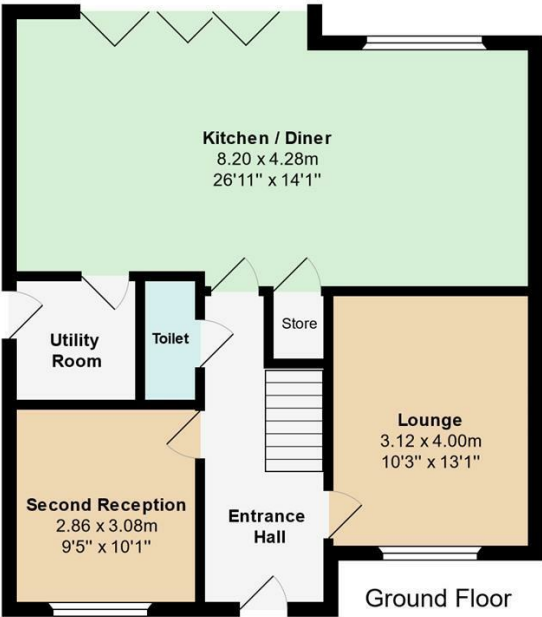
Upstairs, there are four double bedrooms, each with plenty of space for beds and furniture. The master bedroom has a handy ensuite, and the family bathroom has both a full-sized bath and separate, fully-tiled shower cubicle.



Open House West Cumbria

Floor Plans: 3 Nightingale Row, High Harrington

Not to Scale: Dimensions and layout for guidance only



Energy Efficiency Rating		
	Current	Potential
Very energy efficient - lower running costs		
(92 plus) A		92
(81-91) B	85	
(69-80) C		
(55-68) D		
(39-54) E		
(21-38) F		
(1-20) G		
Not energy efficient - higher running costs		
England & Wales		EU Directive 2002/91/EC