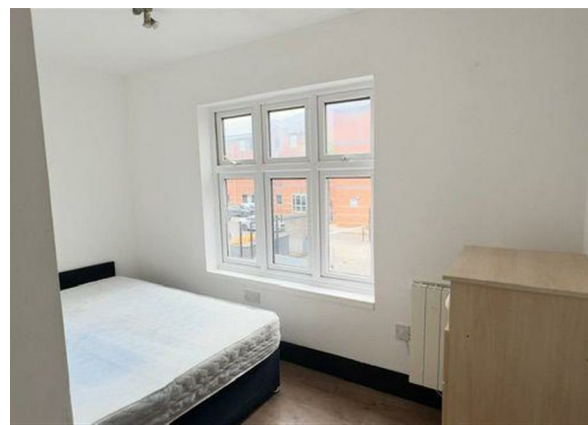
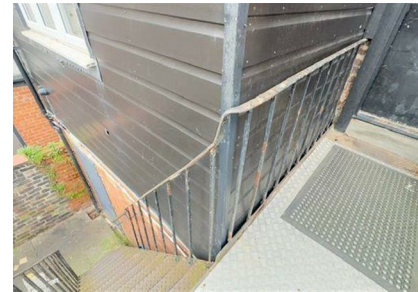
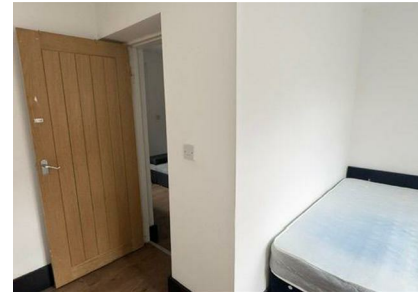


Bridge Street, Bewsey And Whitecross, WA1 2RU

£600

Council Tax Band: A



Welcome to this charming one-bedroom flat located on Bridge Street in the heart of Warrington.

This property boasts a cosy living area, perfect for relaxing or entertaining guests; with a double bedroom that features two windows, ensuring plenty of natural light.

With a town centre location, you'll have easy access to local amenities, shops, and restaurants. Additionally, the proximity to the train station makes commuting to Manchester and Liverpool a breeze.

Measuring at 495 sq ft, this flat is well-suited for individuals or couples looking for a convenient and low-maintenance living space. Don't miss out on the opportunity to rent this lovely property in a prime location.

Contact us today to arrange a viewing!



The Hive Sankey Street, Warrington, WA1  
1XG  
01925 987 085  
info@real5estates.com  
www.real5estates.com



Energy Efficiency Rating		
	Current	Potential
Very energy efficient - lower running costs		
(92 plus) A		
(81-91) B		
(69-80) C		
(55-68) D	63	
(39-54) E		
(21-38) F		
(1-20) G		
Not energy efficient - higher running costs		
England & Wales	EU Directive 2002/91/EC	