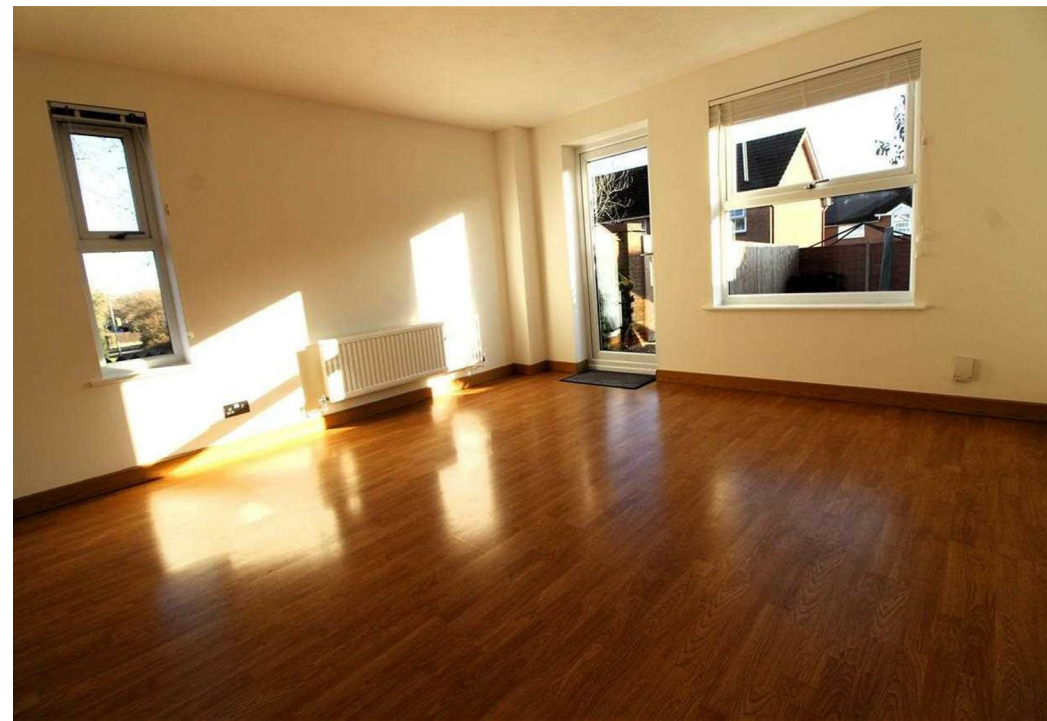
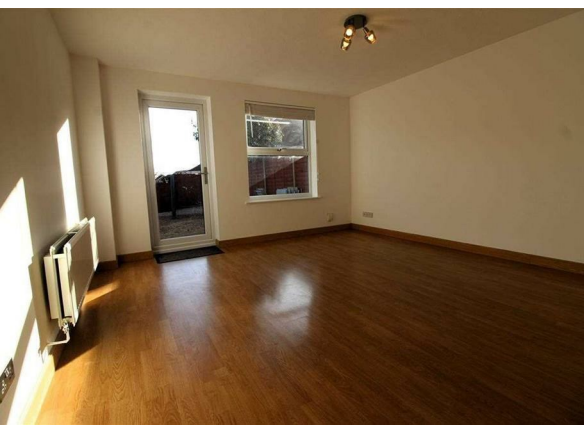


Lacock Drive, Barrs Court, Bristol, BS30 7HD

£1,400

Council Tax Band: C



We are proud to present this very well presented two bedroom end of terrace house.

The accommodation consists of, to the ground floor, a hall, kitchen and lounge/diner, two bedrooms and a family bathroom. There are front, side and rear low maintenance gardens and off street parking for two cars.

With easy access to the A4174 Ring Road and onwards to the motorway network this location is ideal for commuting into Bristol or Bath.

Local shops and amenities are close by also.

This property will suit a professional single person or a couple.

The property is subject to a council tax band of C.

An income of £50,000 pa is required for this property.

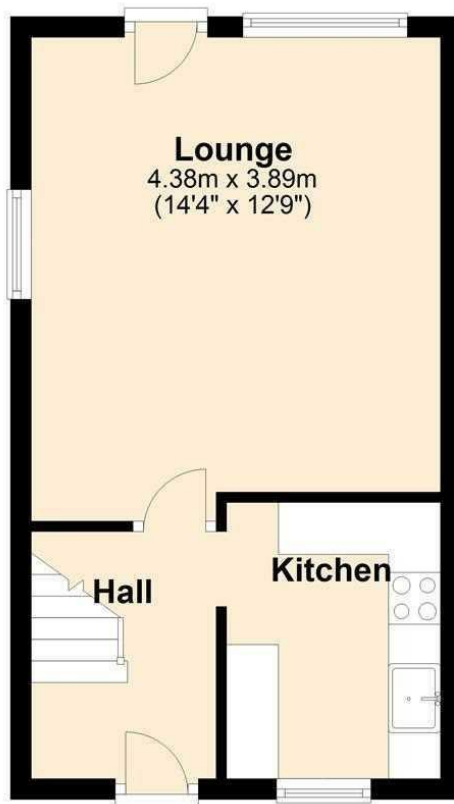
Full referencing and ID checks will apply.

Holding Deposit £320

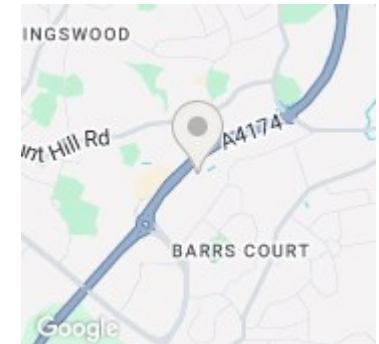
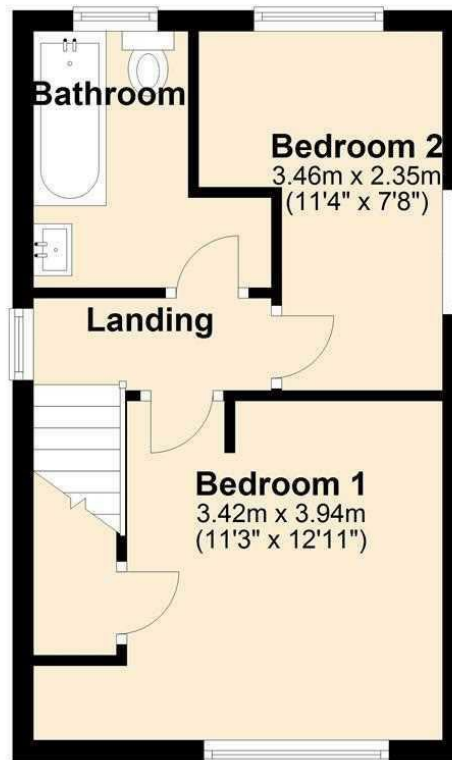


Open House Bristol North East

Ground Floor



First Floor



Energy Efficiency Rating		
	Current	Potential
Very energy efficient - lower running costs		
(92 plus) A		89
(81-91) B		
(69-80) C		64
(55-68) D		
(39-54) E		
(21-38) F		
(1-20) G		
Not energy efficient - higher running costs		
England & Wales		EU Directive 2002/91/EC